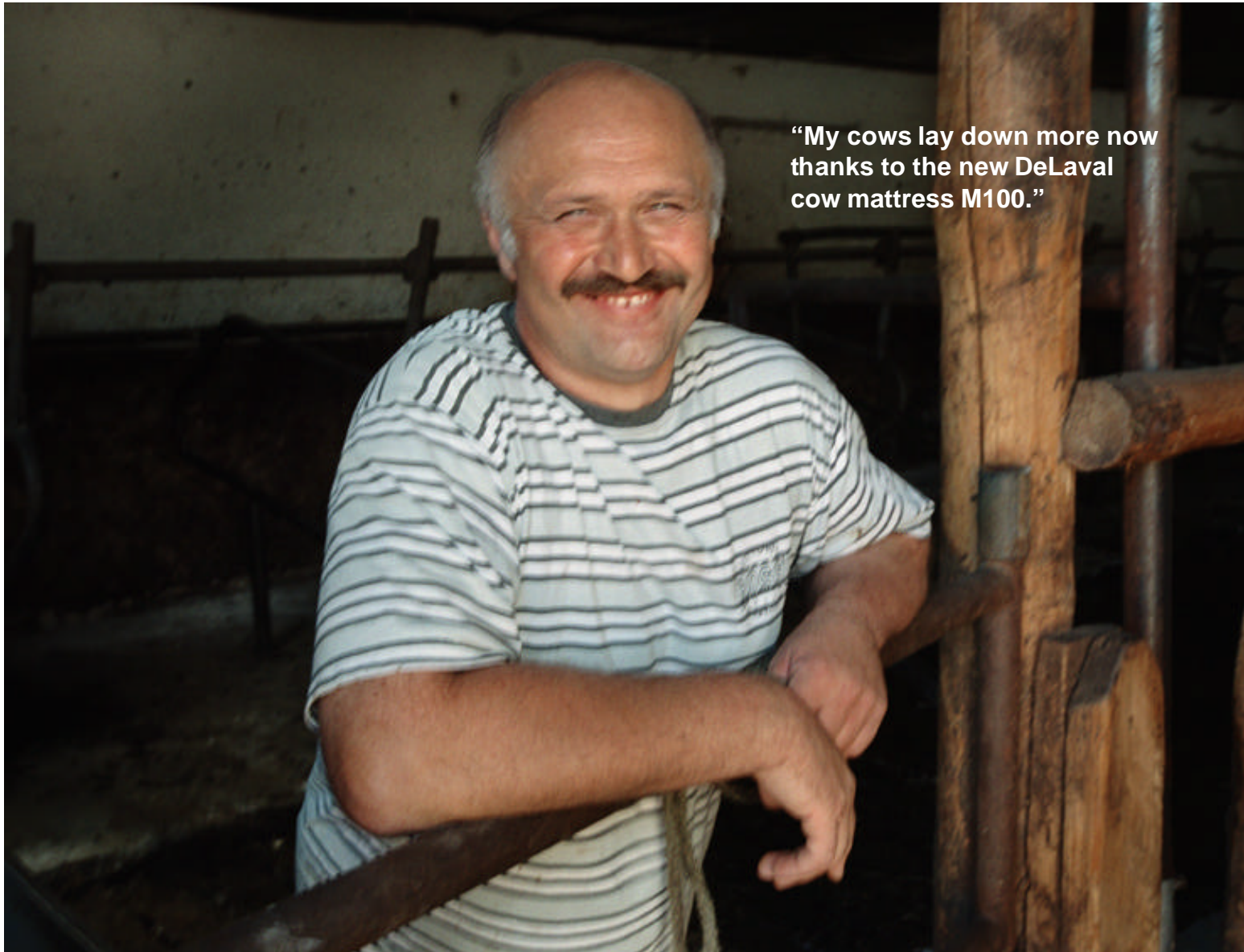




Customer satisfaction survey DeLaval cow mattress M100



“My cows lay down more now thanks to the new DeLaval cow mattress M100.”

Content

General issues

- Interviewed people
- Description of the farm
- Culling rate
- Cubicles
- Bedding material

DeLaval Cow mattress M100

- Cows behavior
- Satisfaction
- Effect
- Influence
- Additional named main positive aspects

Correlation between milk quality and the influence of the mat on the somatic cell count status / bacteria

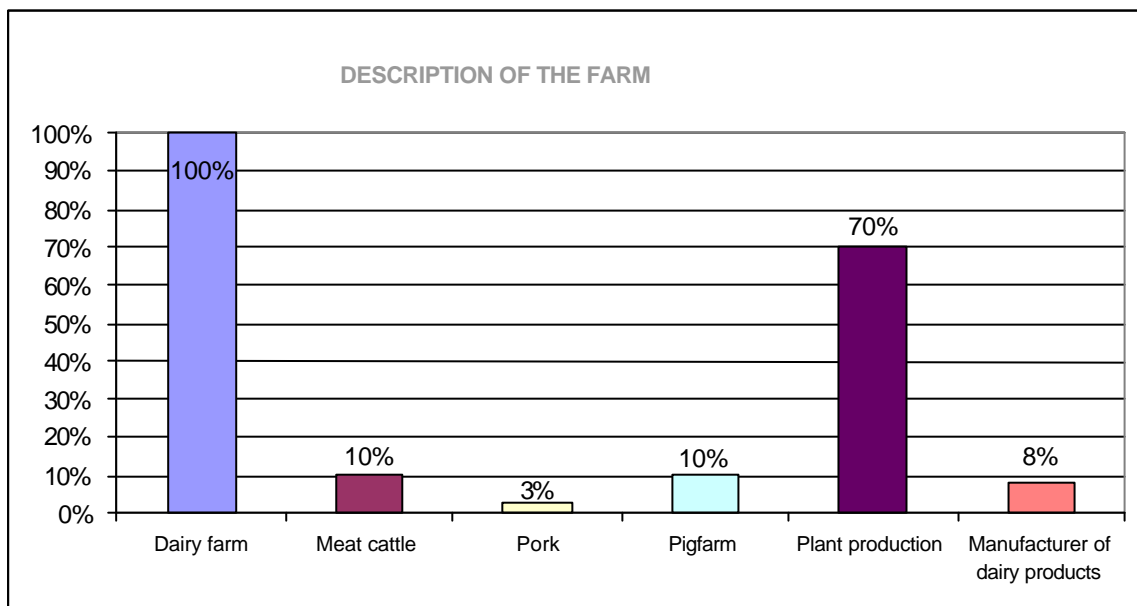
	Somatic cell count status			Bacteria		
	Good	Average	Below average	Good	Average	Below average
Beat Joos Gredig	2			2		
Baguette		2		1		
Bartels	5			5		
Bauwens		3		3		
Blancke	2			2		
Bourg	4			4		
Bredo		3			3	
Brixhe		3		3		
Carron	3			3		
Casparis	3				3	
Charon	3			3		
Christiaens	5			4		
Claeys		2			2	
Clo-Gent-DVV		3		3		
Coens	3			2		
Coulebier	3			3		
De Borman		3			3	
De Bruyne	3			4		
De Mil	1			1		
De Ro		5		5		
Deboel		3		3		
Deketele		4				4
DeLaval Hamra Gärd AB	4			4		
Delmeulle	3			3		
DeRoo	3			3		
Destrebecq	4			4		
Devlies	2			2		
Deweer	4			3		
D'Hauwe		3		3		
Dumay		2			4	
Engels - Schutte		4		4		
Eshuis		4		4		
Esveld	1				1	
Faingnaert	2			2		

2. Description of the farm

Dairy farm with an average of 58 hectare

The other activities are:

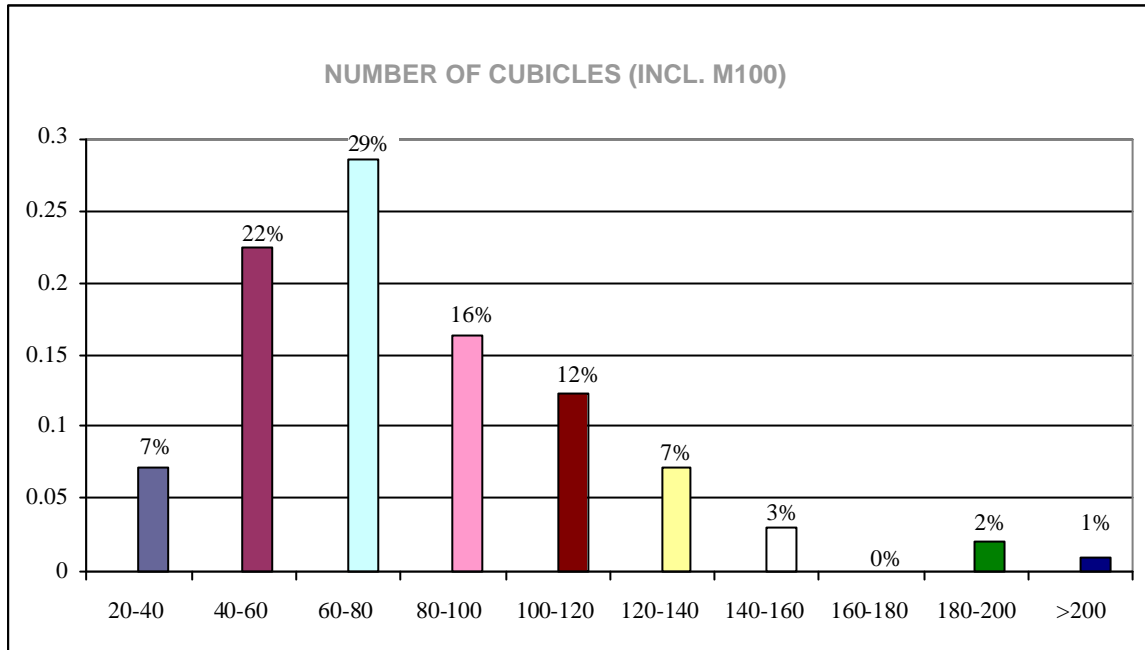
- Meat 10%
- Pork 3%
- Pigs 10%
- Plant production 70%
- Manufacturer of dairy products 8%



% are rounded values, this might cause small differences

Number of cubicles in total (incl. M100): Average 76

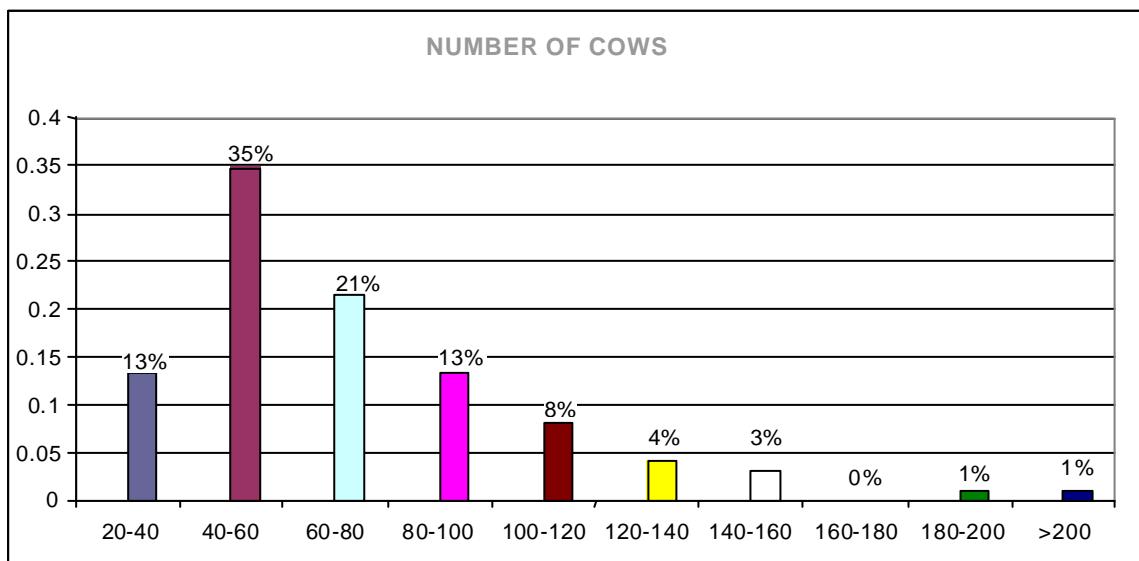
- 20 and 40 cubicles 7%
- 40 and 60 cubicles 22%
- 60 and 80 cubicles 29%
- 80 and 100 cubicles 16%
- 100 and 120 cubicles 12%
- 120 and 140 cubicles 7%
- 140 and 160 cubicles 3%
- 180 and 200 cubicles 2%
- > 200 cubicles 1%



% are rounded values, this might cause small differences

Number of cows: Average 66

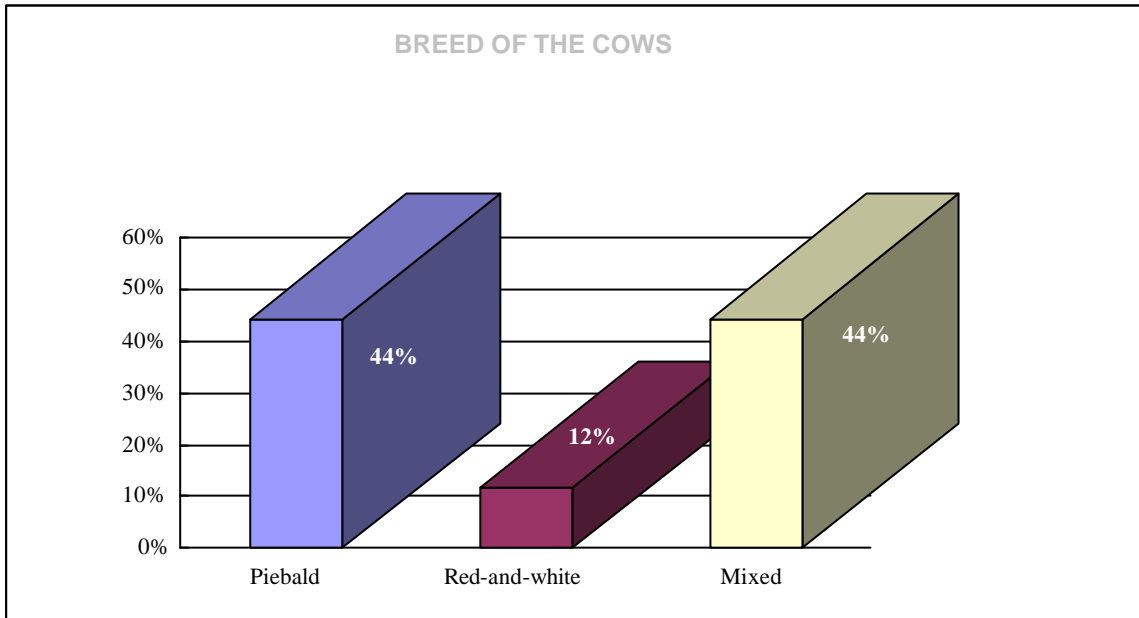
- 20 and 40 cows 15%
- 40 and 60 cows 36%
- 60 and 80 cows 23%
- 80 and 100 cows 14%
- 100 and 120 cows 6%
- 120 and 140 cows 3%
- 140 and 160 cows 1%
- 180 and 200 cows 1%
- > 200 cows 1%



% are rounded values, this might cause small differences

Breed of the cows:

- Piebald 44%
- Red-and-white 12%
- Mixed 44%



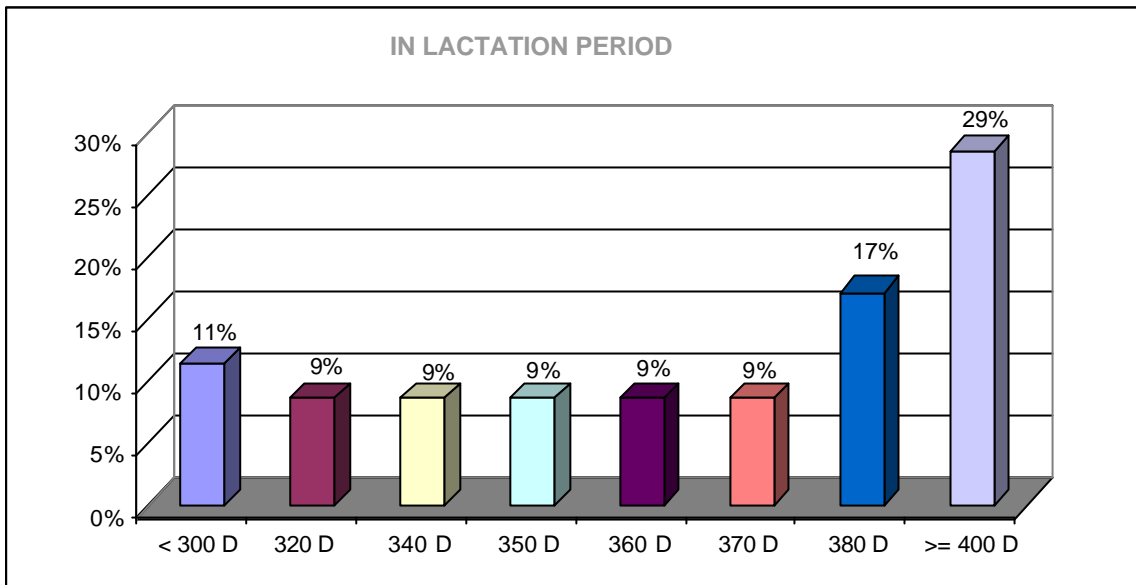
% are rounded values, this might cause small differences

Size of the cows:

- Average size of the cow in cm: Average 144 cm
- Biggest cow in cm: Average 155 cm

In lactation period: Average 367 days

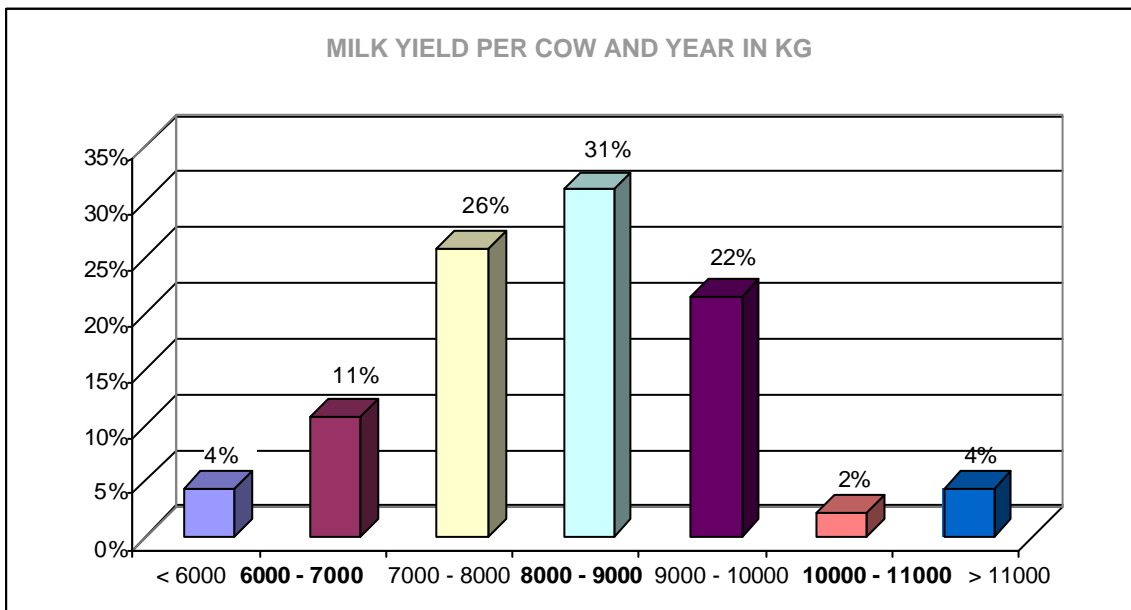
- < 320 days 11%
- 320 days 9 %
- 340 days 9 %
- 350 days 6 %
- 360 days 9 %
- 370 days 9 %
- 380 days 17 %
- > = 400 days 29 %



% are rounded values, this might cause small differences

Milk yield per cow and year in kg: Average 8 099 kg

- < 6 000 kg 4 %
- 6 000 – 7 000 kg 11 %
- 7 000 – 8 000 kg 26 %
- 8 000 – 9 000 kg 31 %
- 9 000 – 10 000 kg 22 %
- 1 000 – 11 000 kg 2 %
- > 11 000 kg 4 %

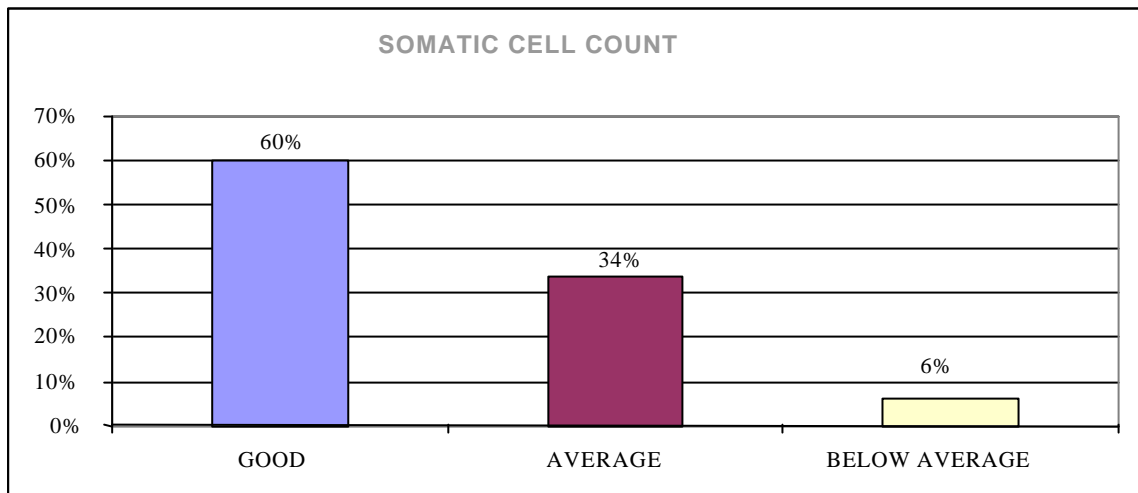


% are rounded values, this might cause small differences

Milk quality

Somatic cell count status

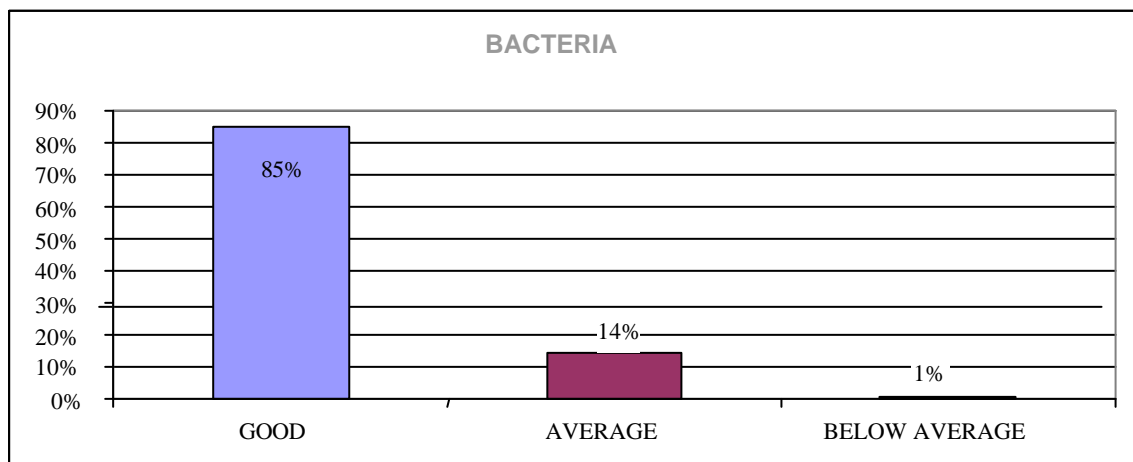
- Good 60 % means < 120 000
- Average 34 % means 120 000 – 300 000
- Below average 6 % means > 300 000



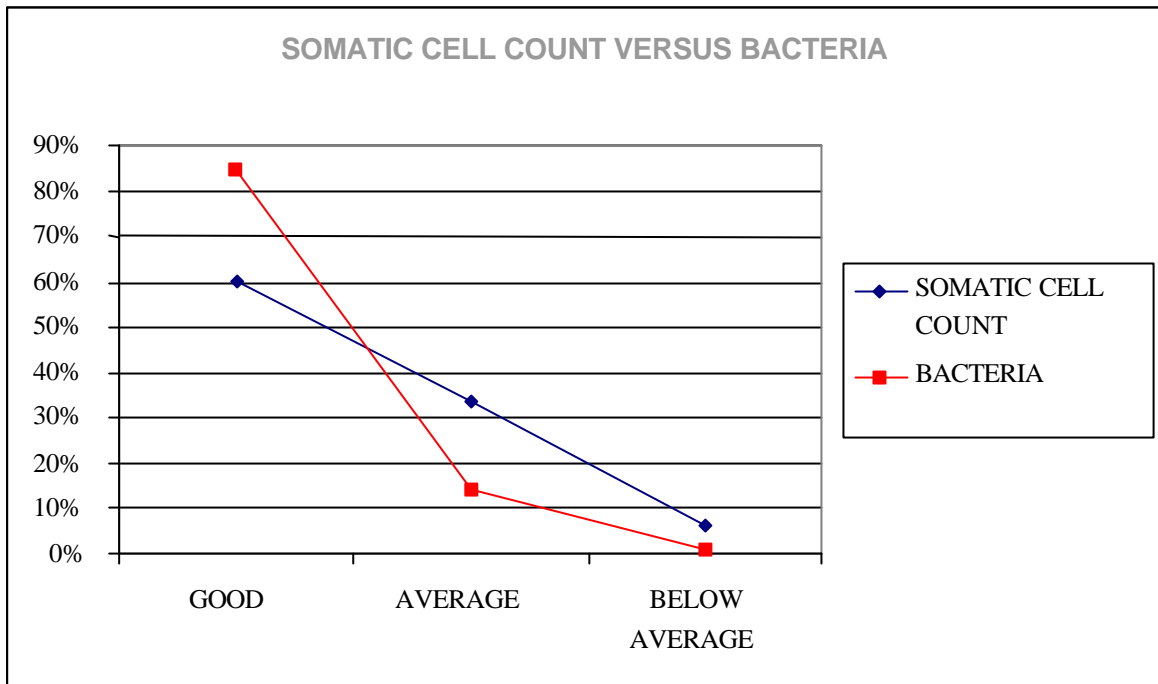
% are rounded values, this might cause small differences

Bacteria

- Good 85 % means < 10 000
- Average 14 % means 10 000 – 30 000
- Below average 1 % means > 30 000



% are rounded values, this might cause small differences



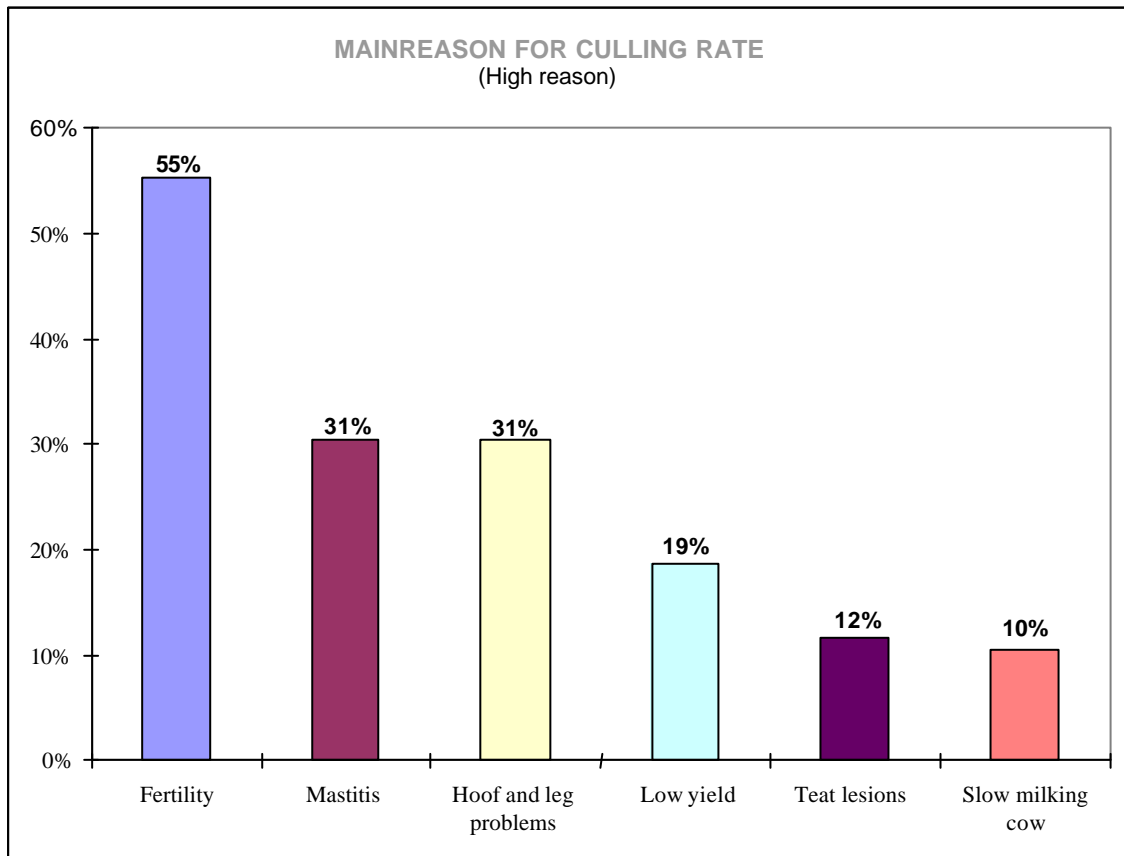
% are rounded values, this might cause small differences

3. Culling rate

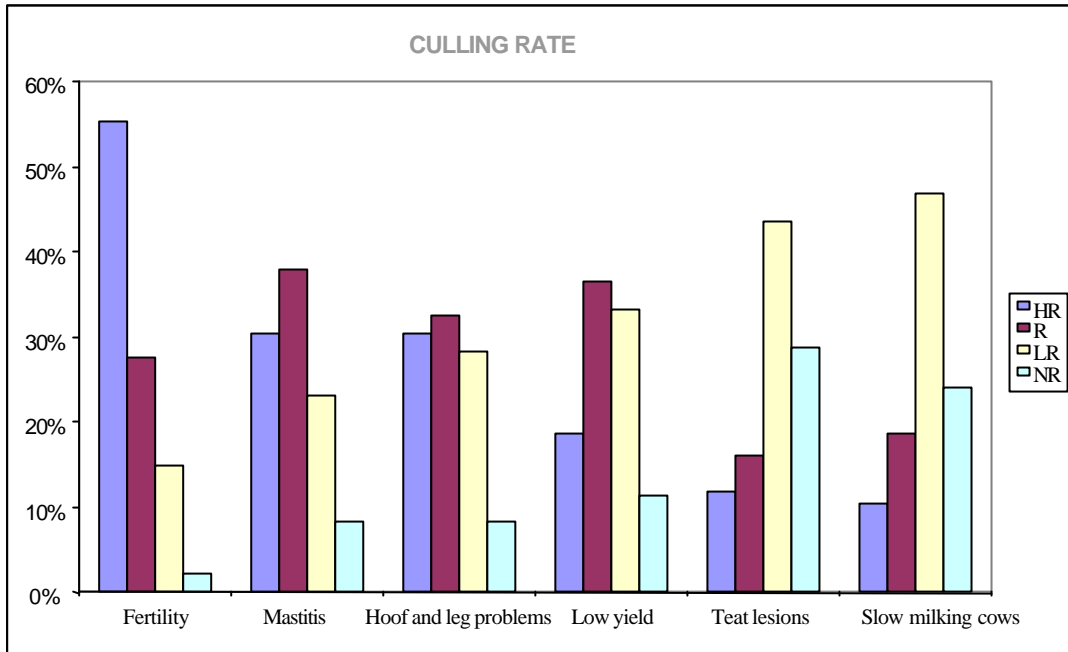
Main reason for culling rate

(Farmers were asked to define scores from high reason to no reason)

	HR	R	LR	NR
Fertility	55%	28%	15%	2%
Mastitis	31%	38%	23%	8%
Hoof and leg problems	31%	33%	28%	8%
Low yield	19%	36%	33%	11%
Teat lesions	12%	16%	44%	29%
Slow milking cow	10%	19%	47%	24%



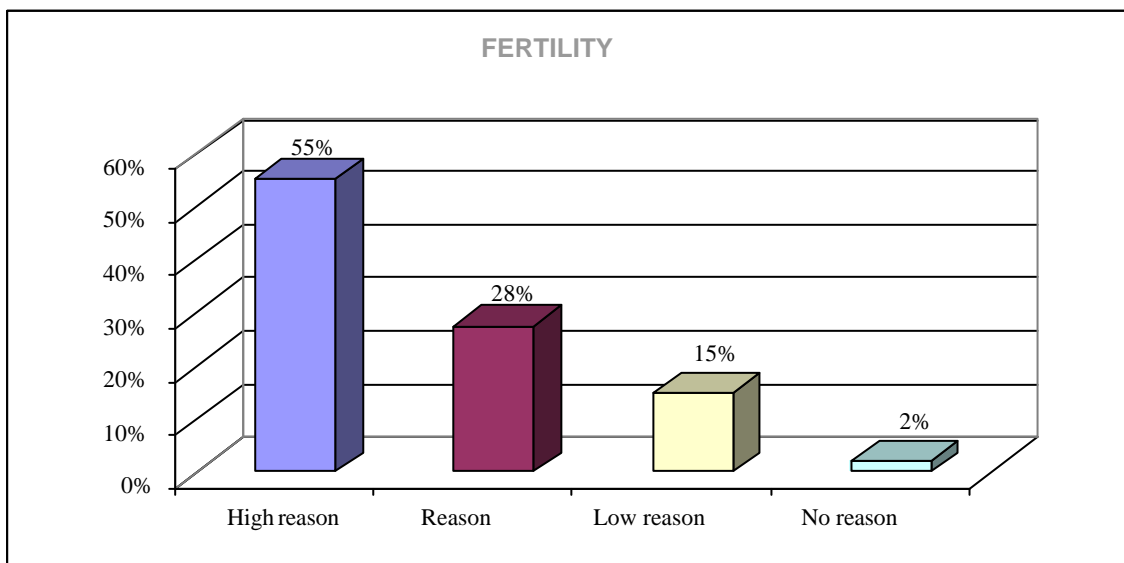
% are rounded values, this might cause small differences



% are rounded values, this might cause small differences

Fertility

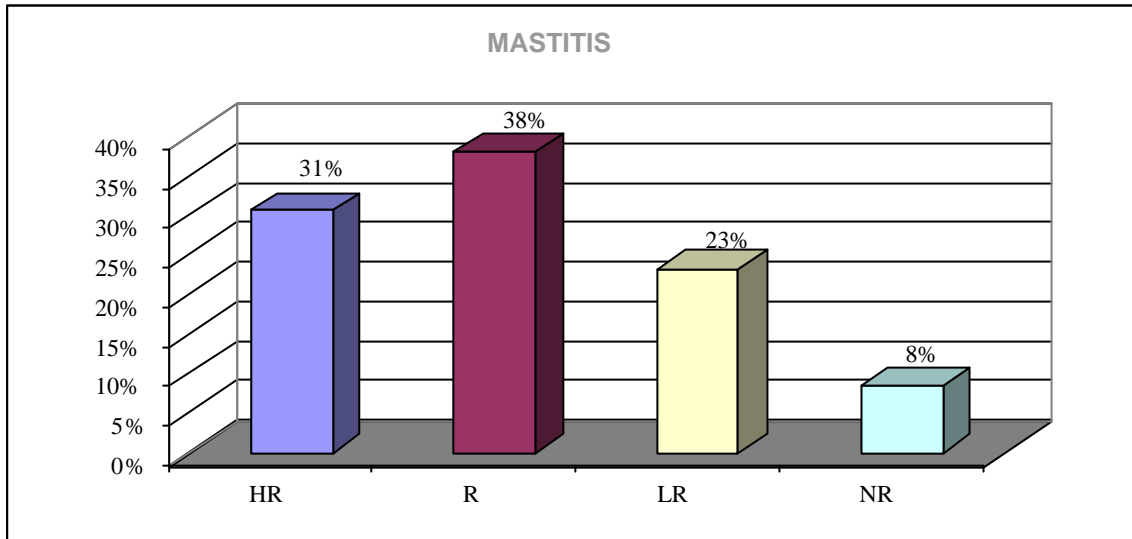
- High reason 55 %
- Reason 28 %
- Low reason 15 %
- No reason 2 %



% are rounded values, this might cause small differences

Mastitis

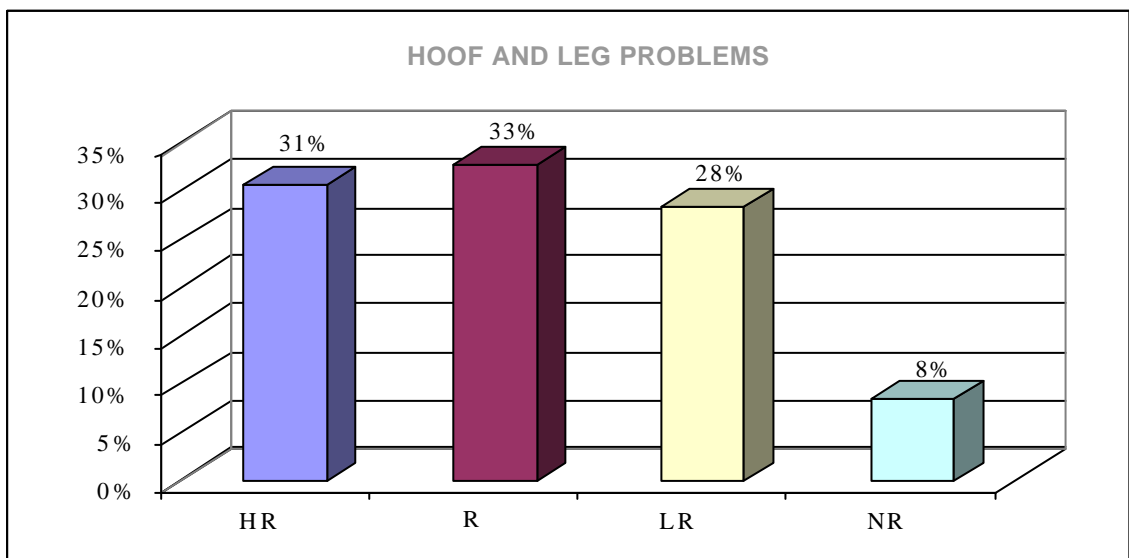
- High reason 31 %
- Reason 38 %
- Low reason 23 %
- No reason 8 %



% are rounded values, this might cause small differences

Hoof and leg problems

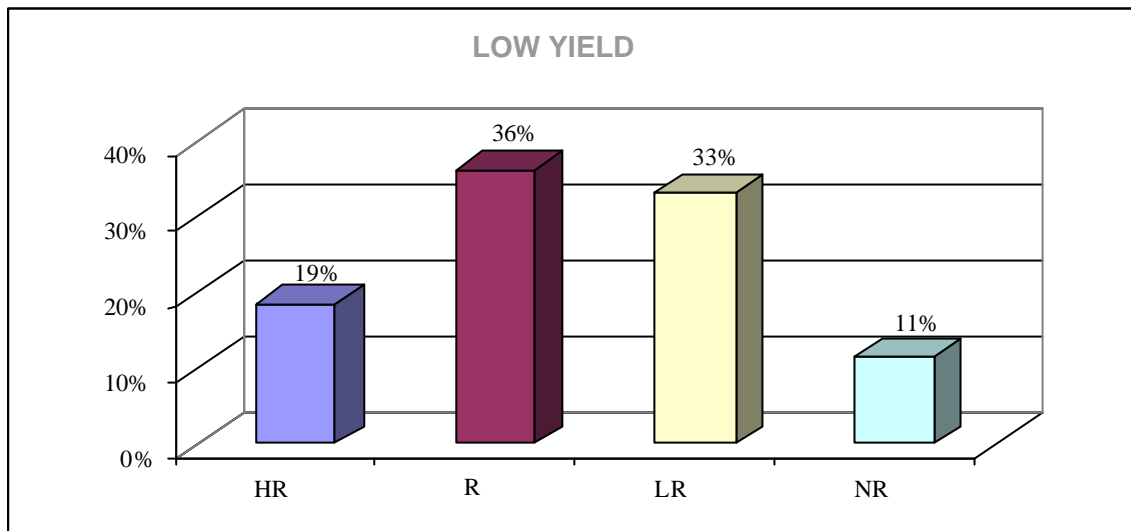
- High reason 31 %
- Reason 33 %
- Low reason 28 %
- No reason 8 %



% are rounded values, this might cause small differences

Low yield

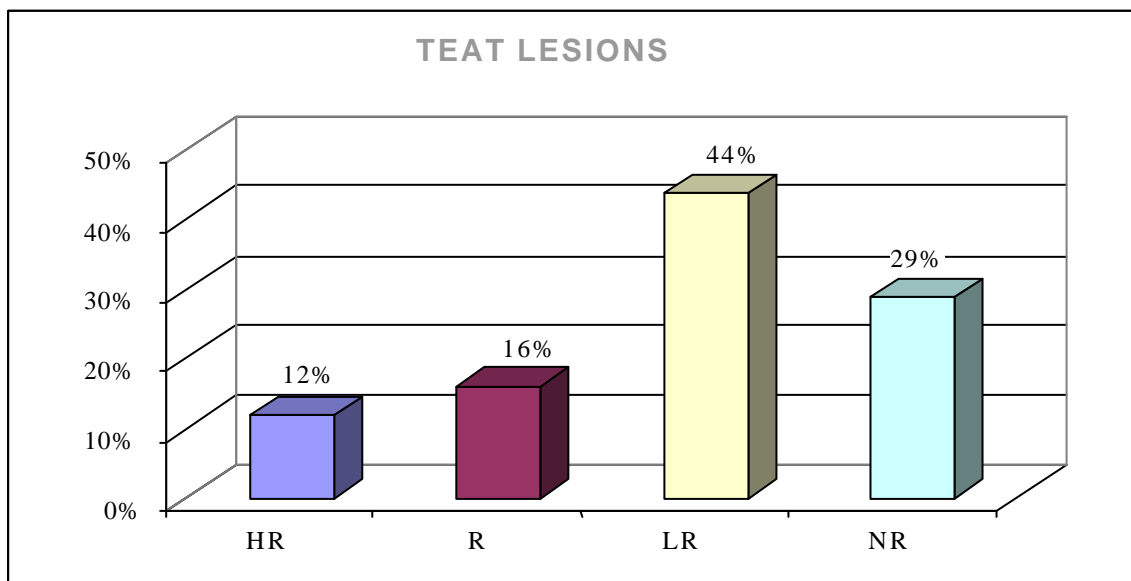
- High reason 19 %
- Reason 36 %
- Low reason 33 %
- No reason 11 %



% are rounded values, this might cause small differences

Teat lesion

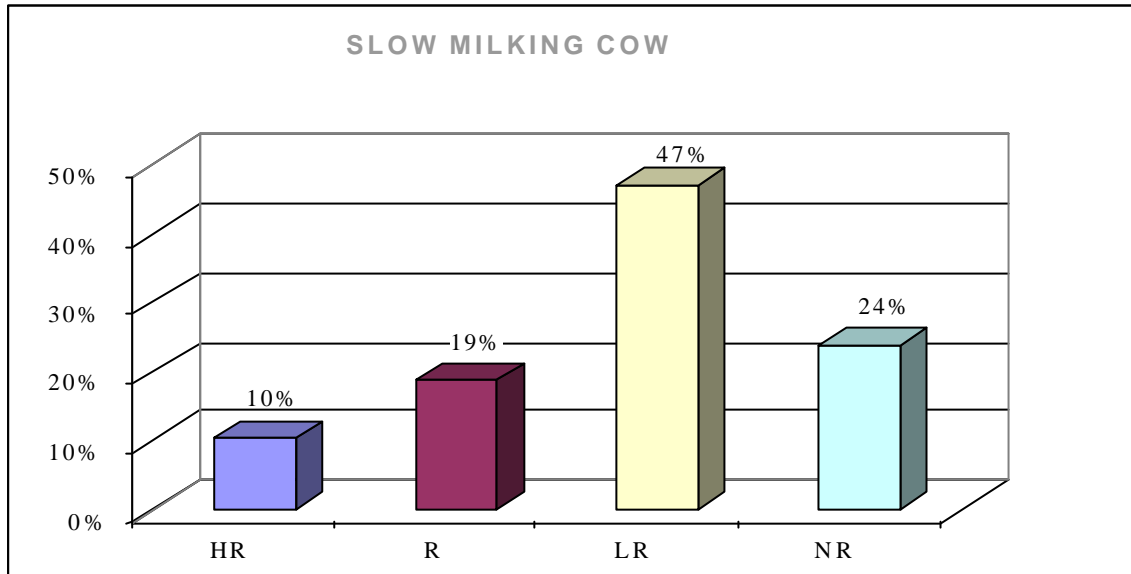
- High reason 12 %
- Reason 16 %
- Low reason 44 %
- No reason 29 %



% are rounded values, this might cause small differences

Slow milking cow

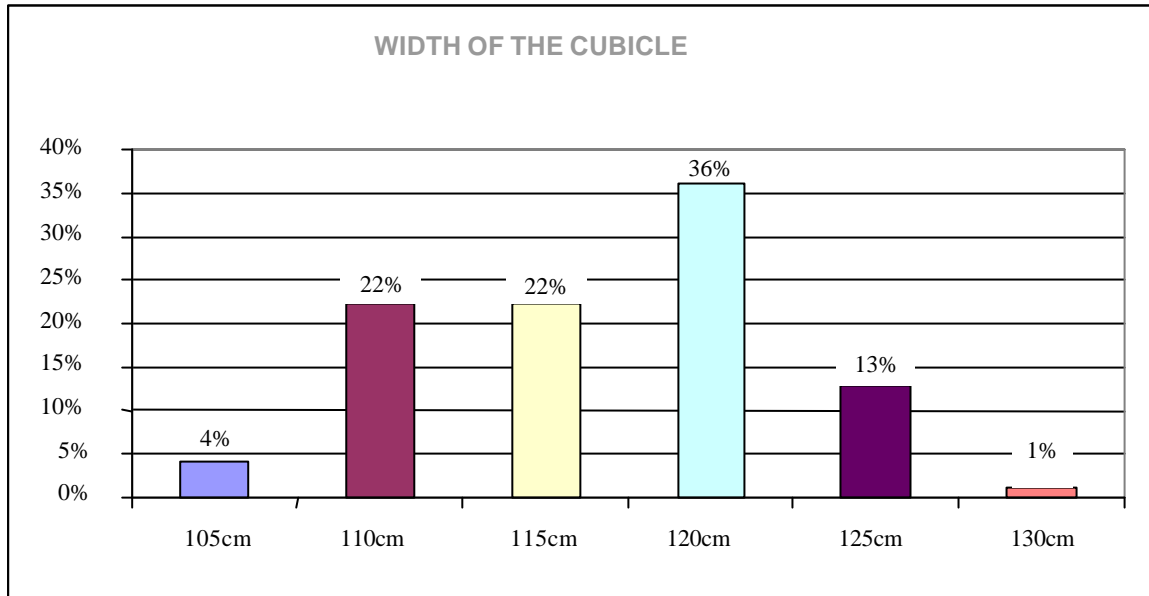
- High reason 10 %
- Reason 19 %
- Low reason 47 %
- No reason 24 %



% are rounded values, this might cause small differences

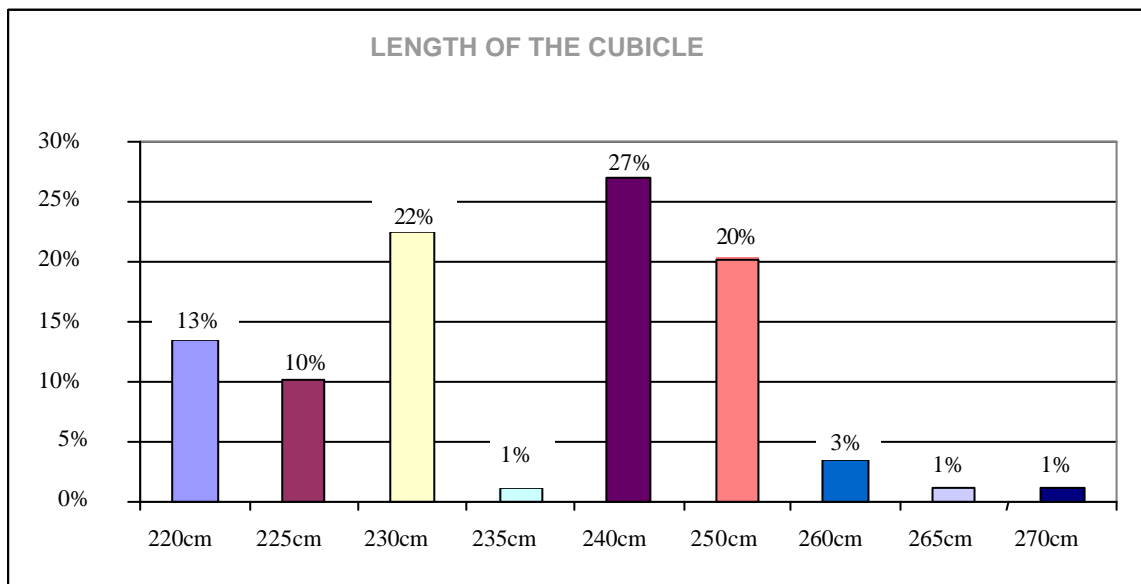
4. Cubicles

Width of the cubicle



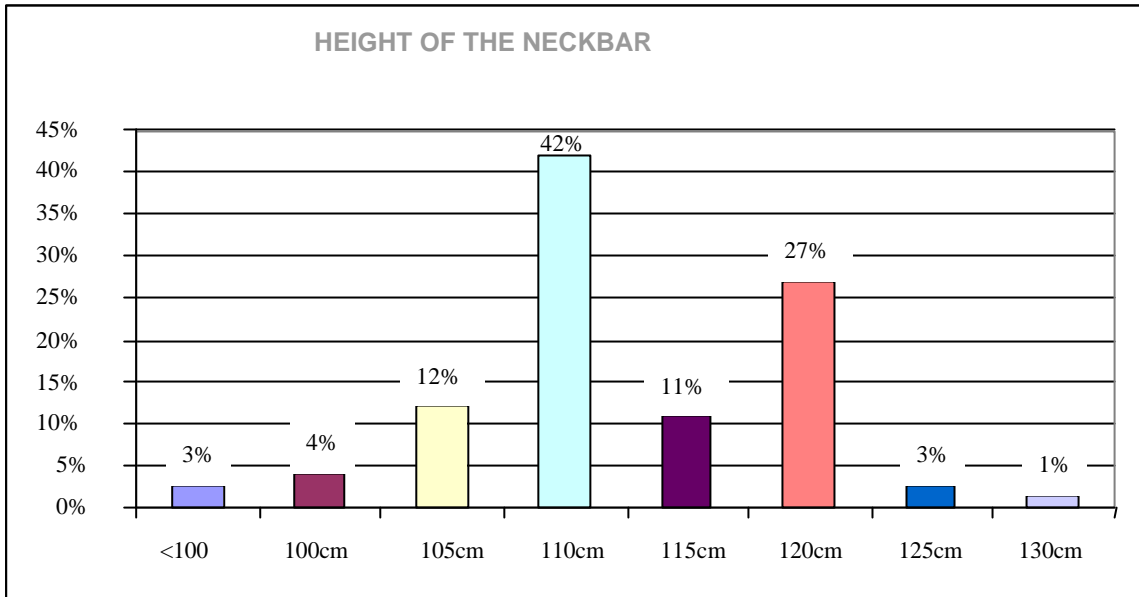
% are rounded values, this might cause small differences

Length of the cubicle



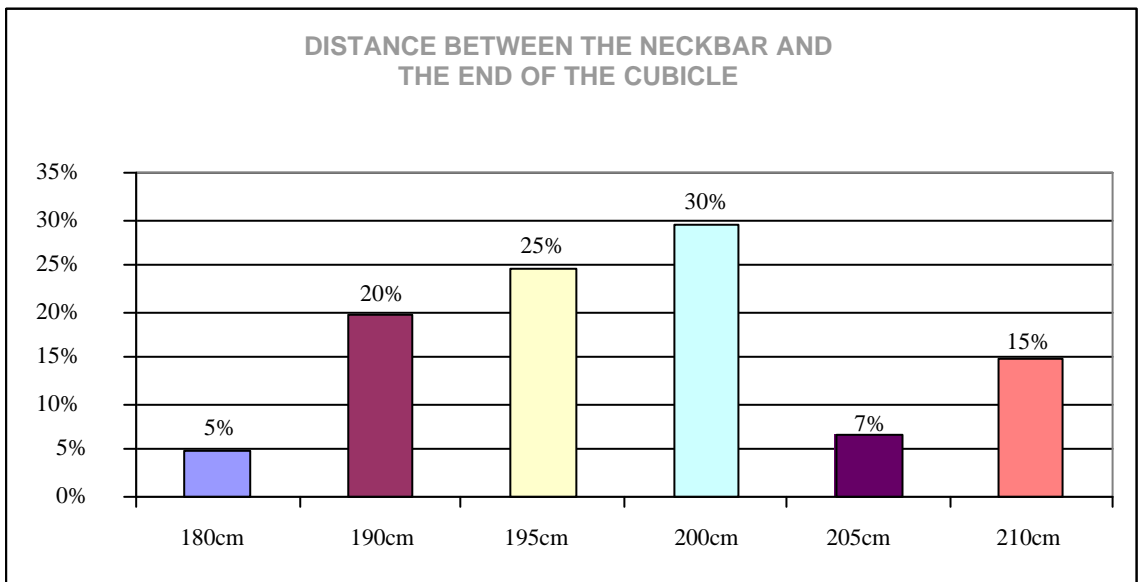
% are rounded values, this might cause small differences

Height of the neckbar



% are rounded values, this might cause small differences

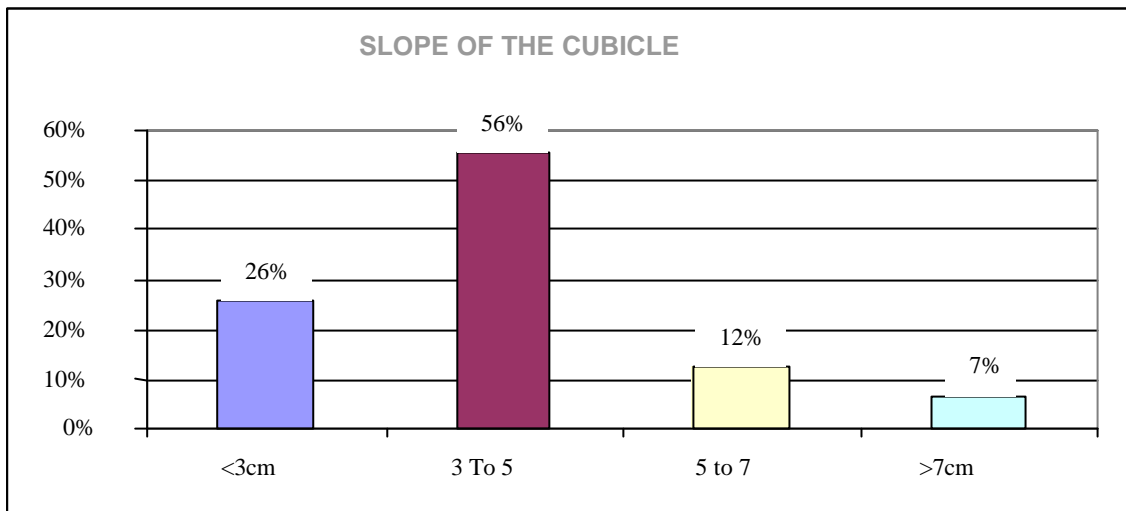
Distance between the neckbar and the end of the cubicle



% are rounded values, this might cause small differences

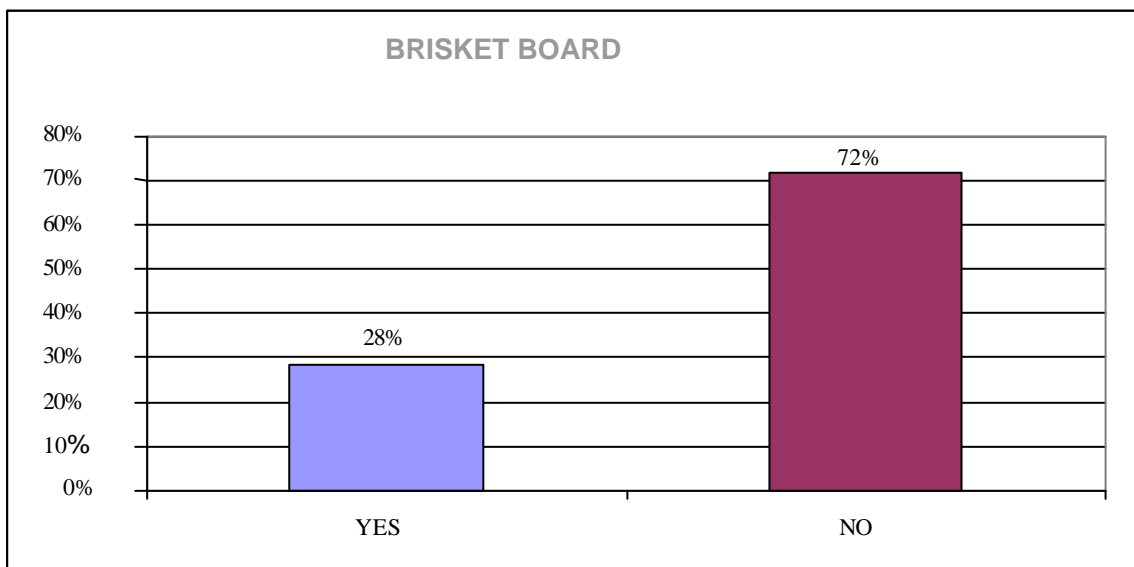
Slope of the cubicle

- < 3 cm 26 %
- 3 cm to 5 cm 56 %
- 5 cm to 7 cm 12 %
- > 7 cm 7 %



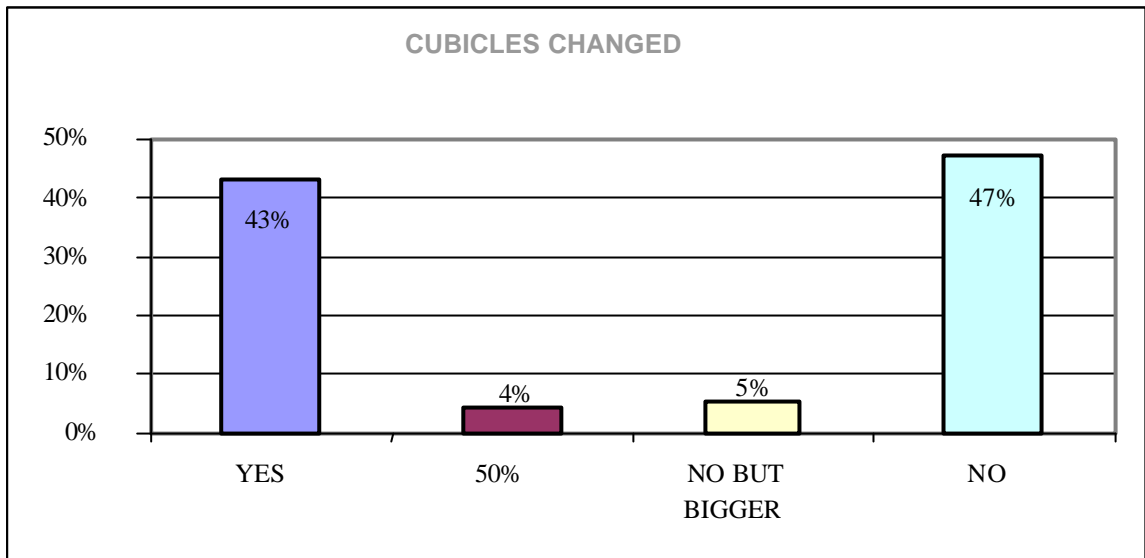
% are rounded values, this might cause small differences

Brisket board



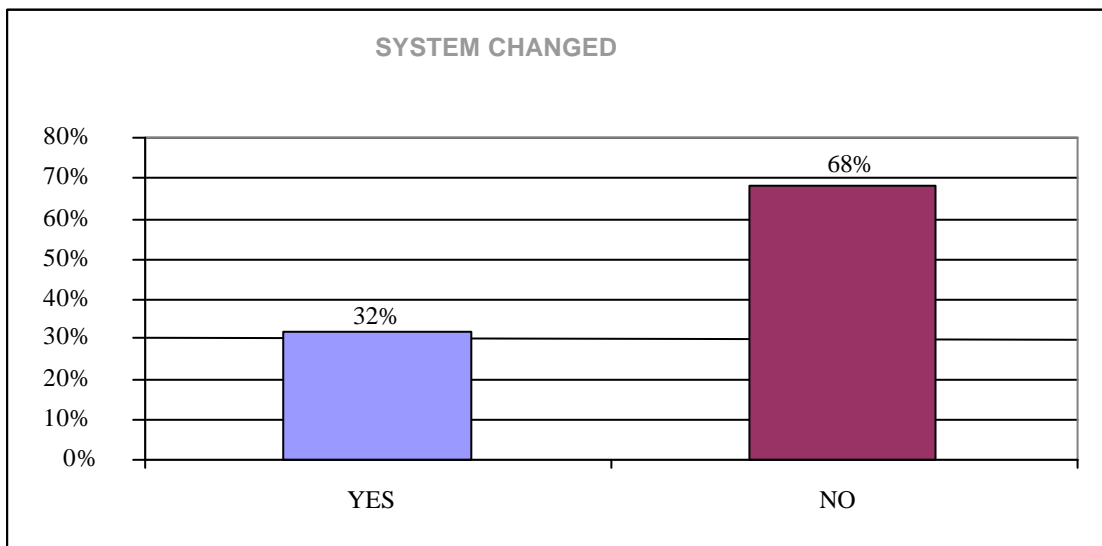
% are rounded values, this might cause small differences

Are the cubicles renewed or enlarged with the installation of M100



% are rounded values, this might cause small differences

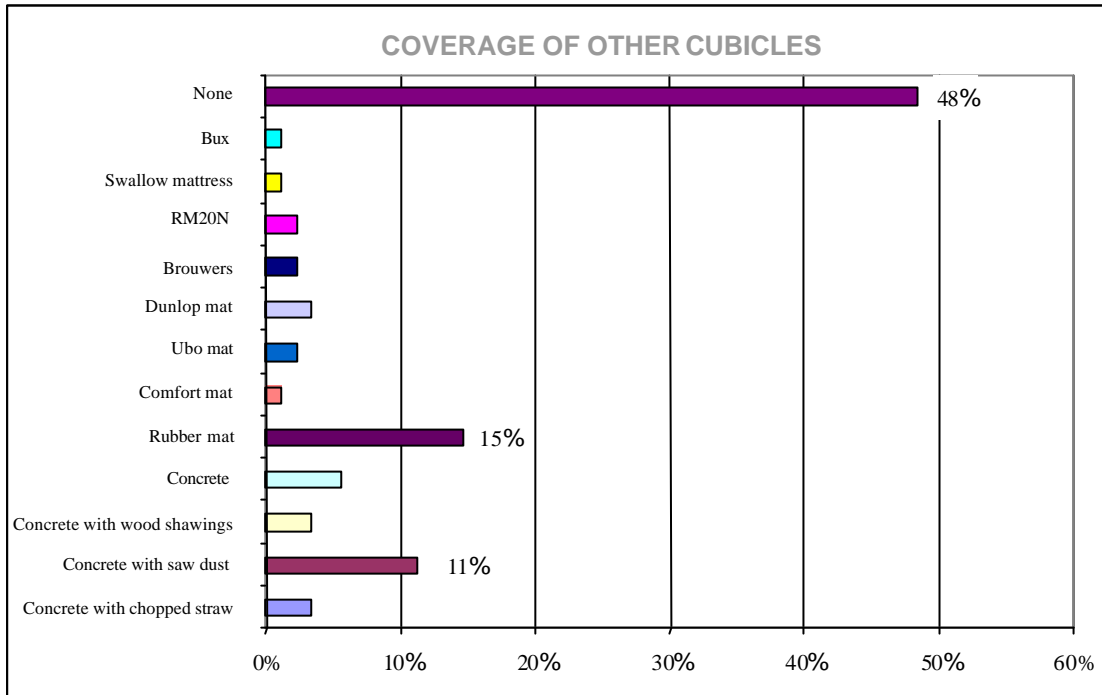
Did you change the system of the barn from tied up to loose house?



% are rounded values, this might cause small differences

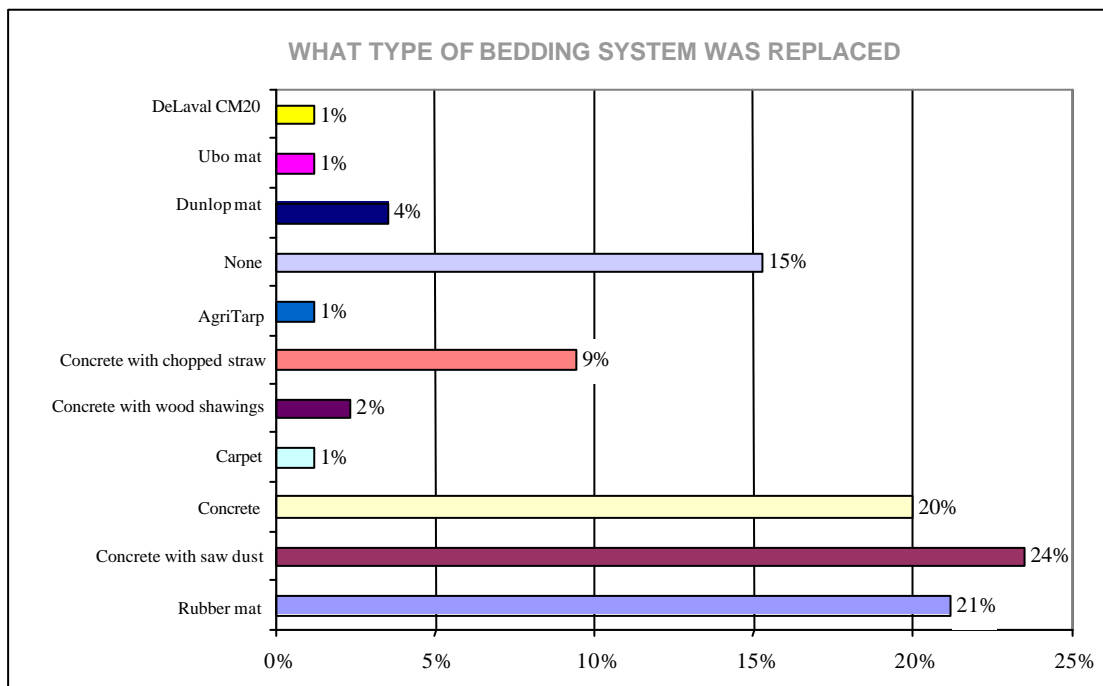
5. Bedding material

Coverage of other cubicles



% are rounded values, this might cause small differences

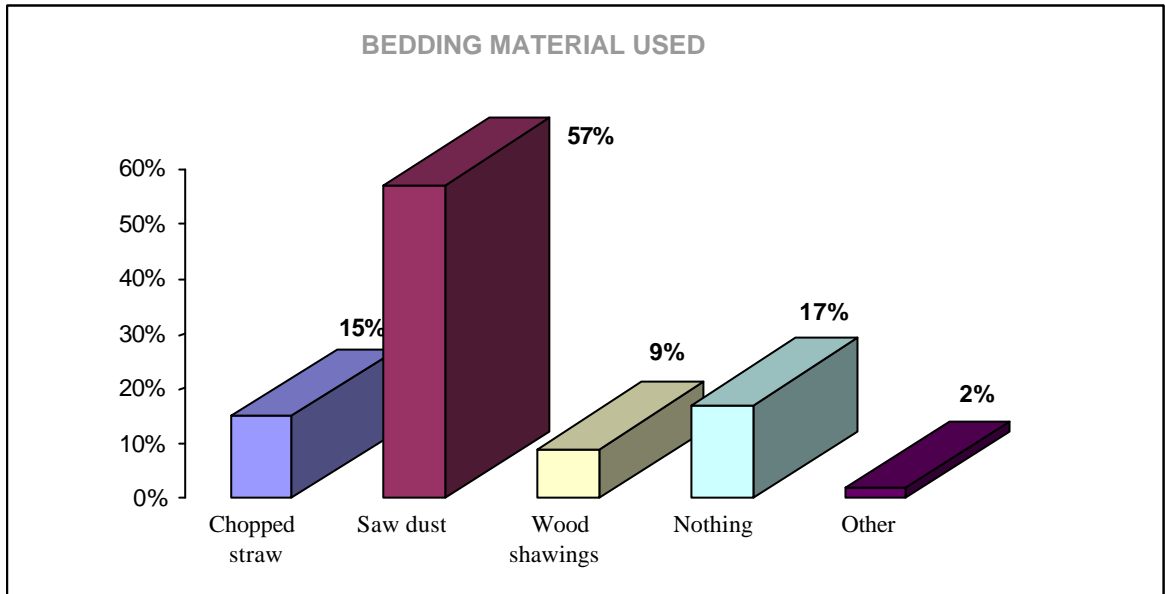
Coverage of other cubicles



% are rounded values, this might cause small differences

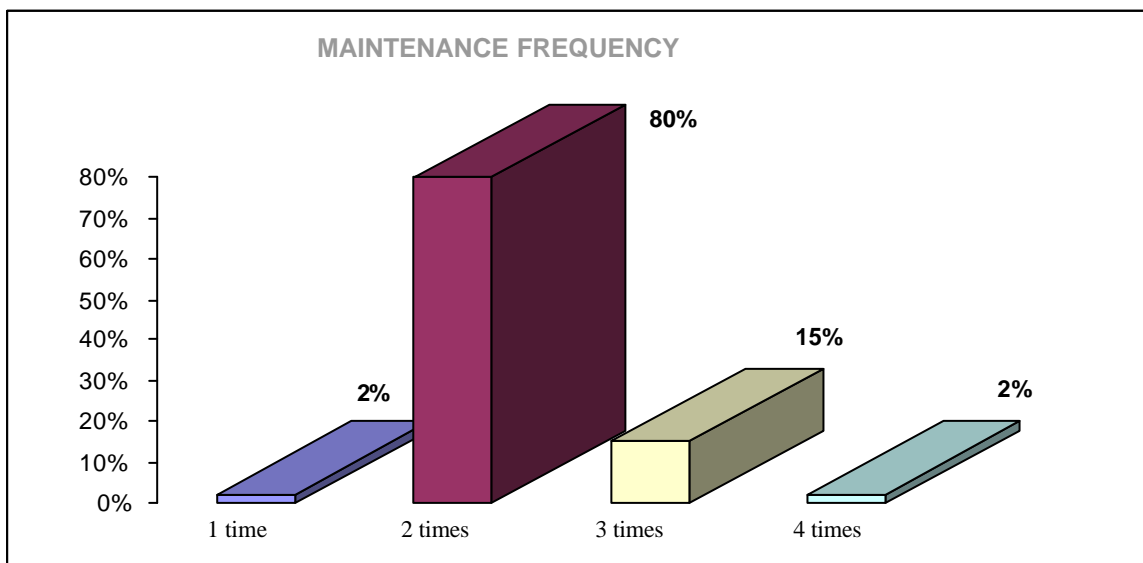
Bedding material used

- Chopped straw 15 %
- Saw dust 57 %
- Wood shavings 9 %
- Nothing 17 %
- Other 2 %



% are rounded values, this might cause small differences

Maintenance frequency

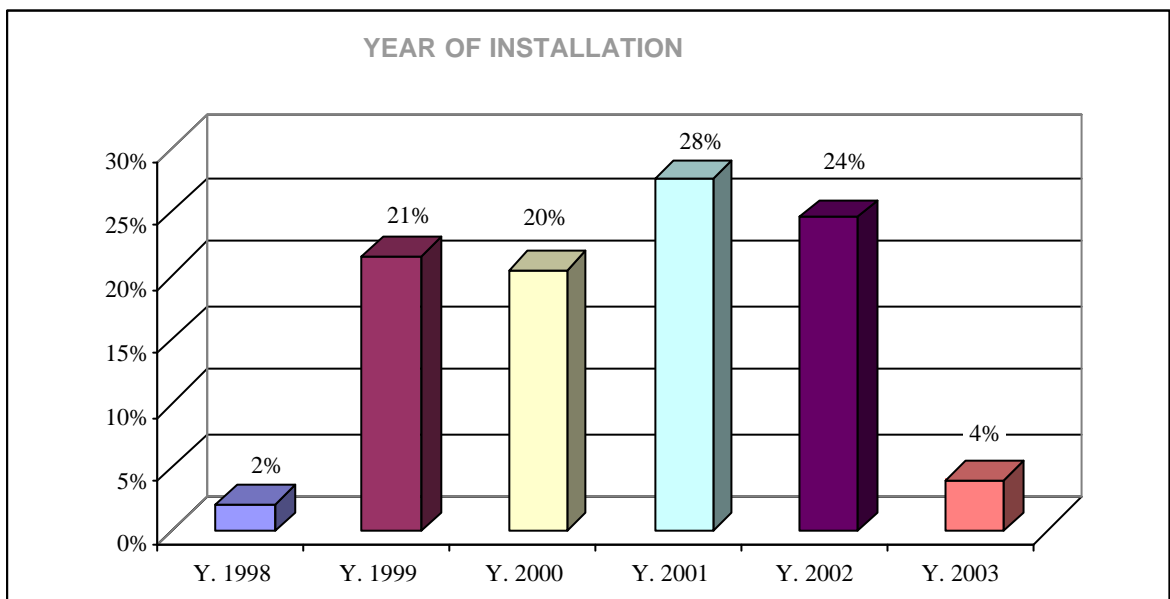


% are rounded values, this might cause small differences

6. Cow's behaviour

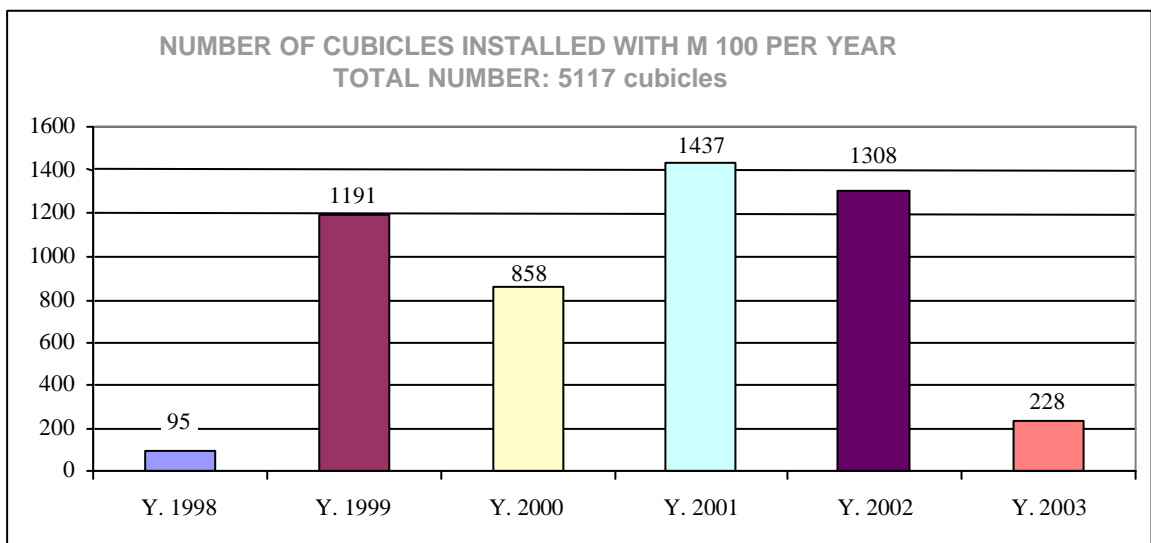
Date of installation

- 1998 2 %
- 1999 21 %
- 2000 20 %
- 2001 28 %
- 2002 24 %
- 2003 4 %

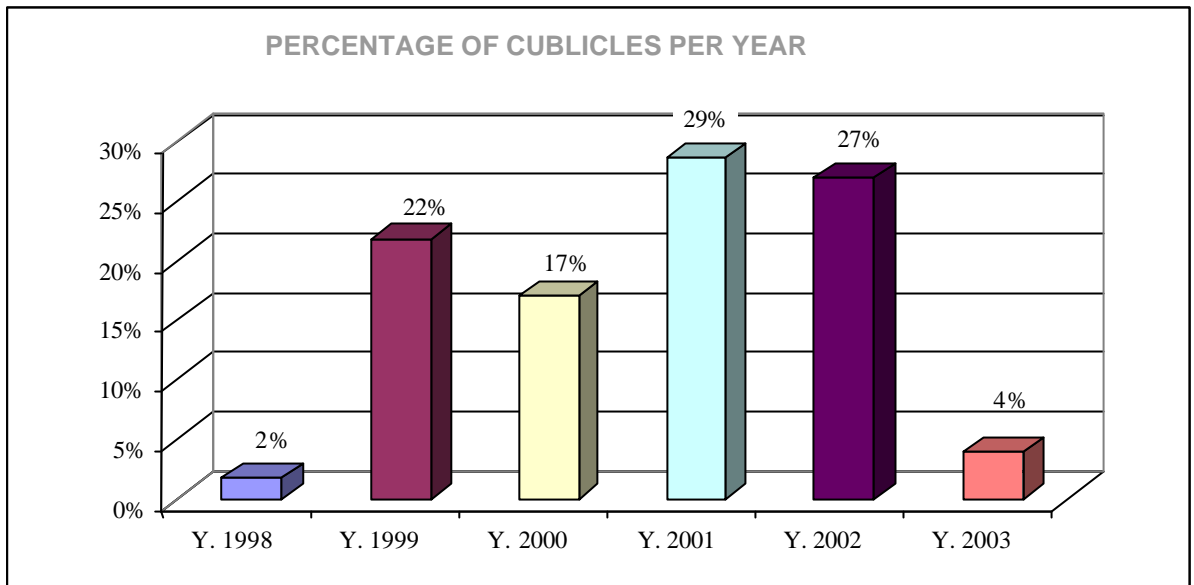


% are rounded values, this might cause small differences

Number of M 100 per year

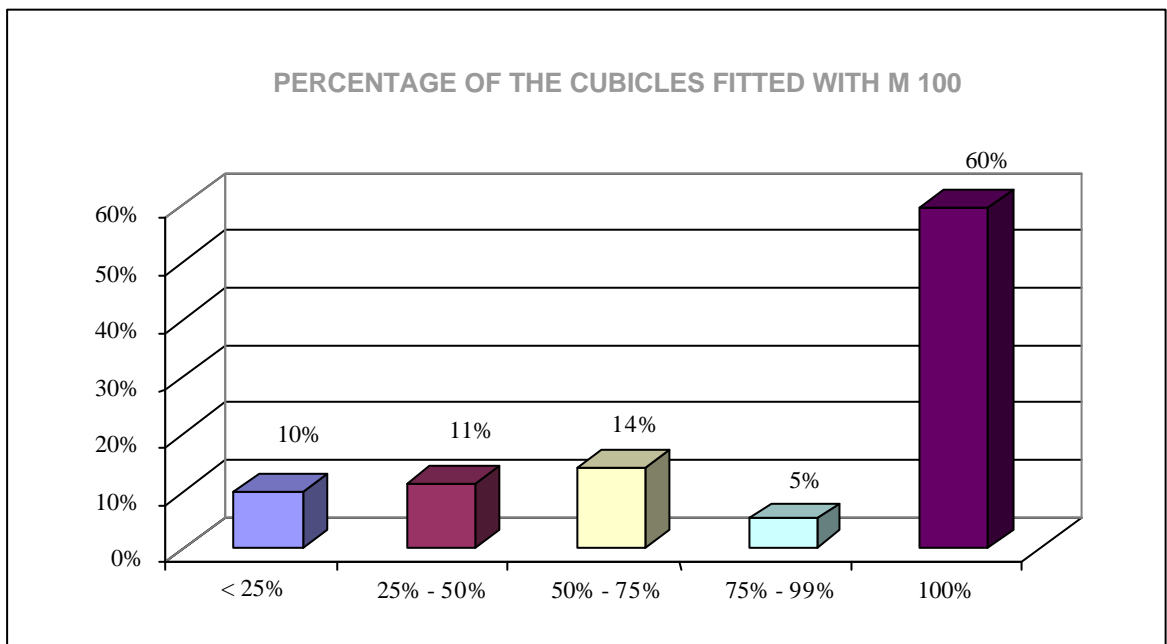


% are rounded values, this might cause small differences



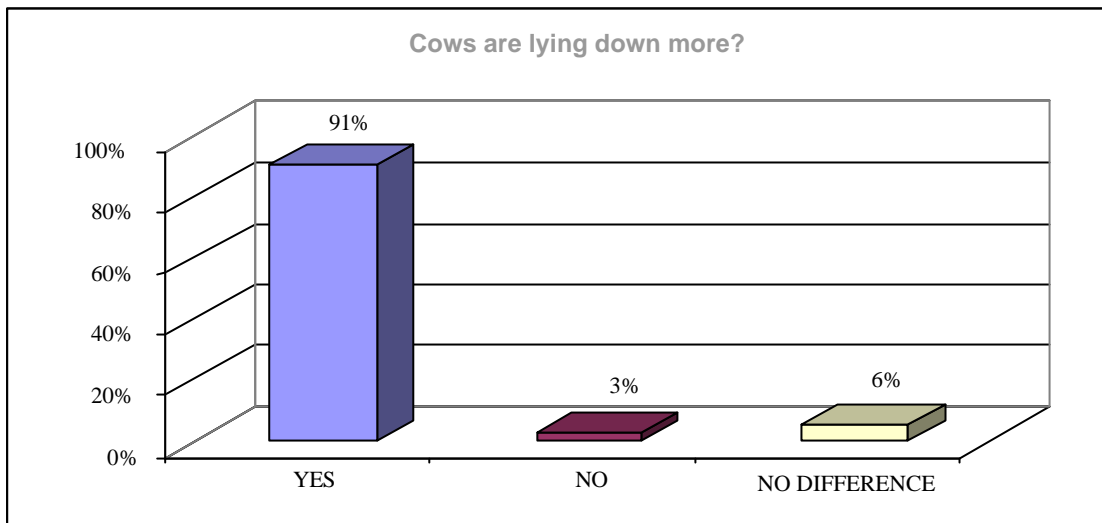
% are rounded values, this might cause small differences

Total number of cubicles versus cubicles fitted with M100



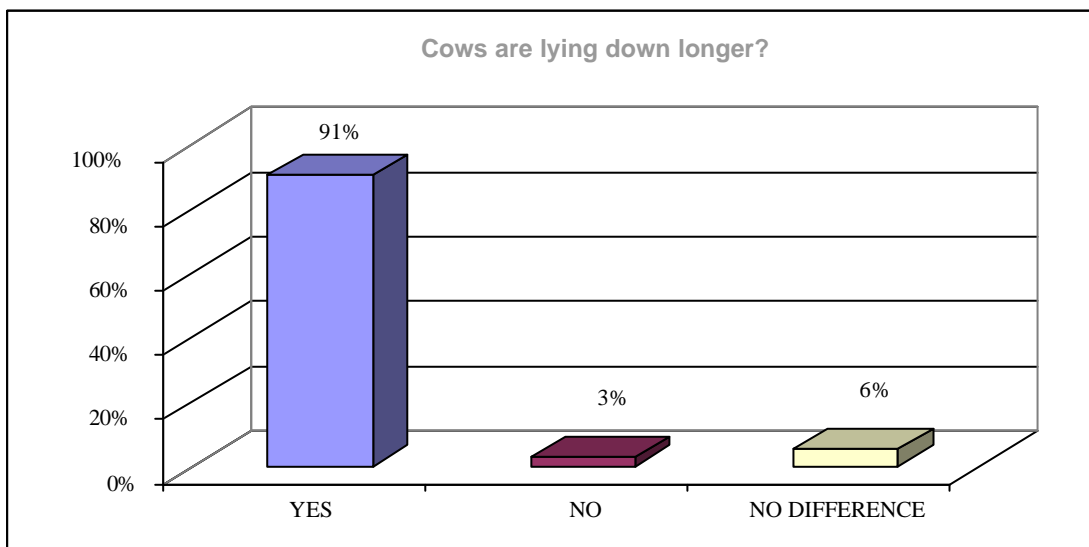
% are rounded values, this might cause small differences

Cows are lying down more than before



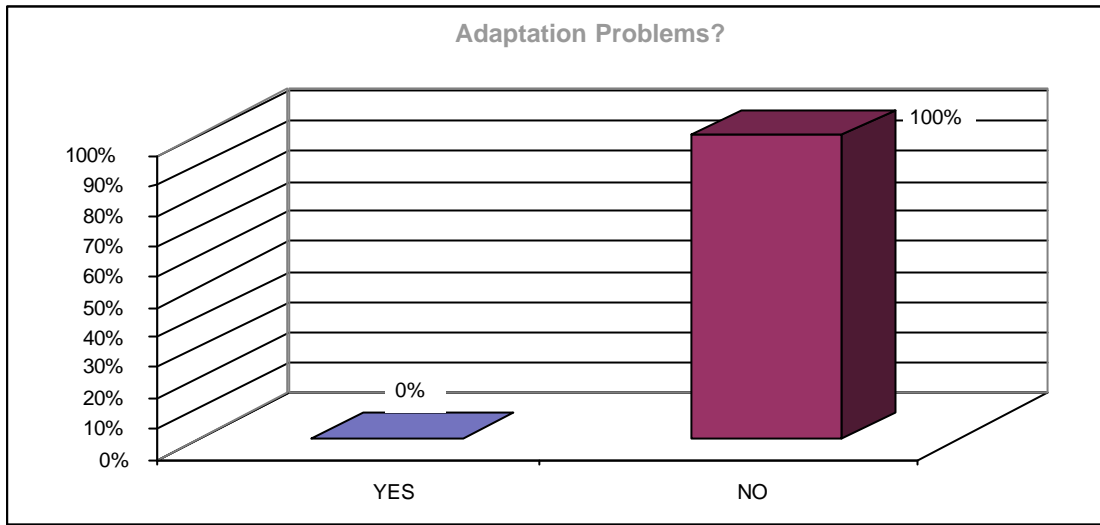
% are rounded values, this might cause small differences

Cows are lying down longer than before



% are rounded values, this might cause small differences

Adaptation problems

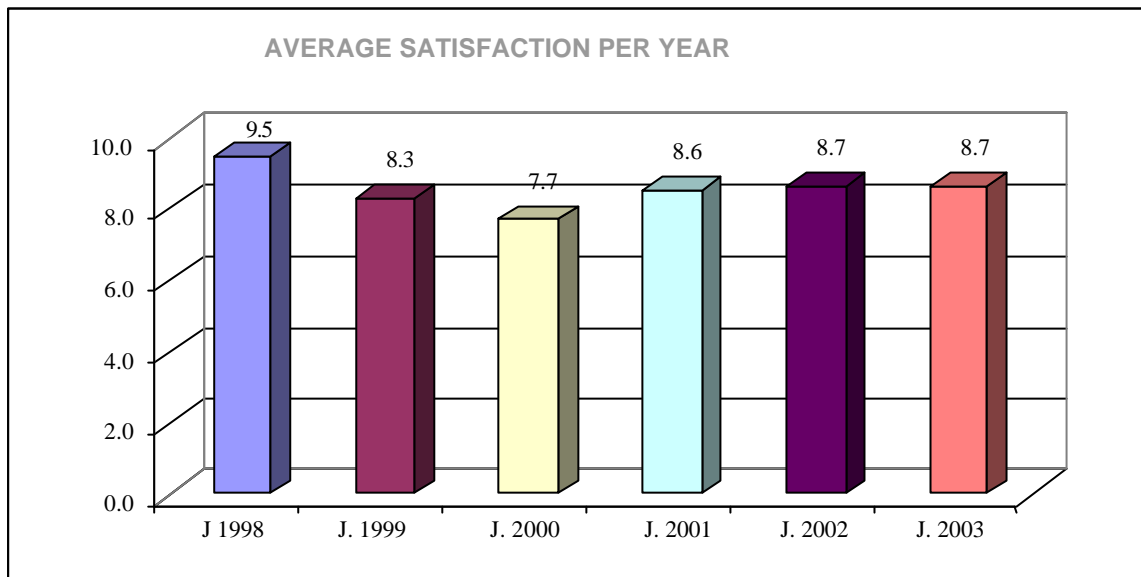


% are rounded values, this might cause small differences

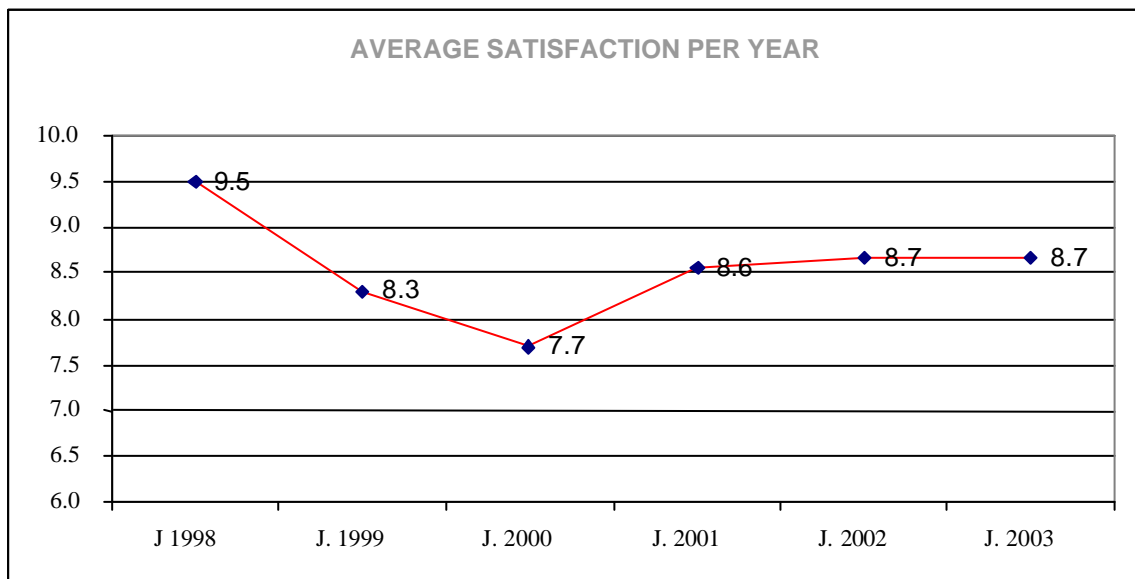
7. Satisfaction

The farmers had to indicate their Global Satisfaction Score on a scale from 1 to 10
1 = not satisfied, 10 = very satisfied

Satisfaction per year

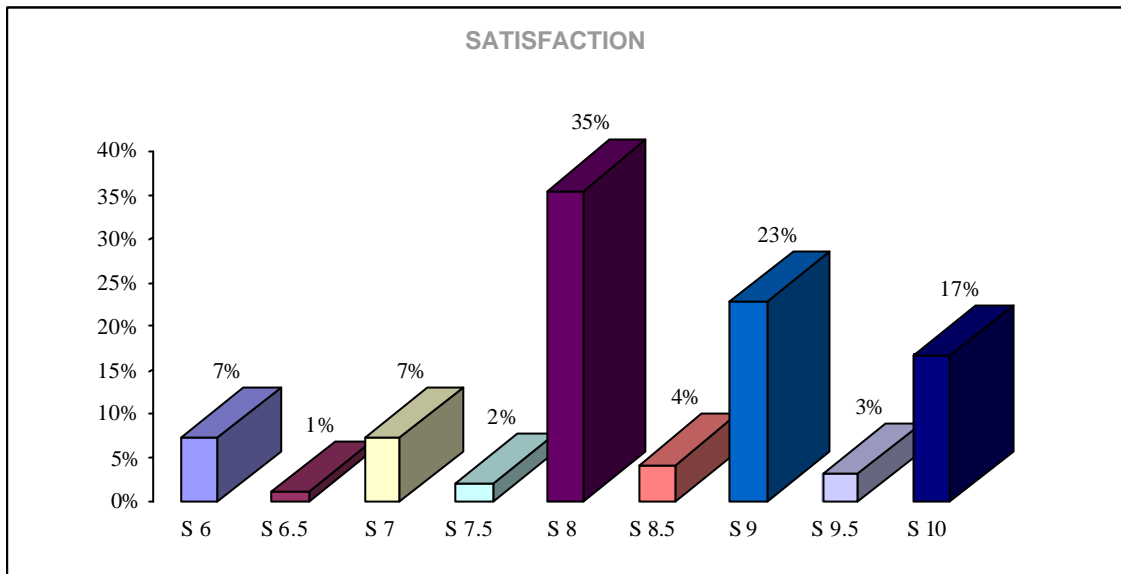


% are rounded values, this might cause small differences



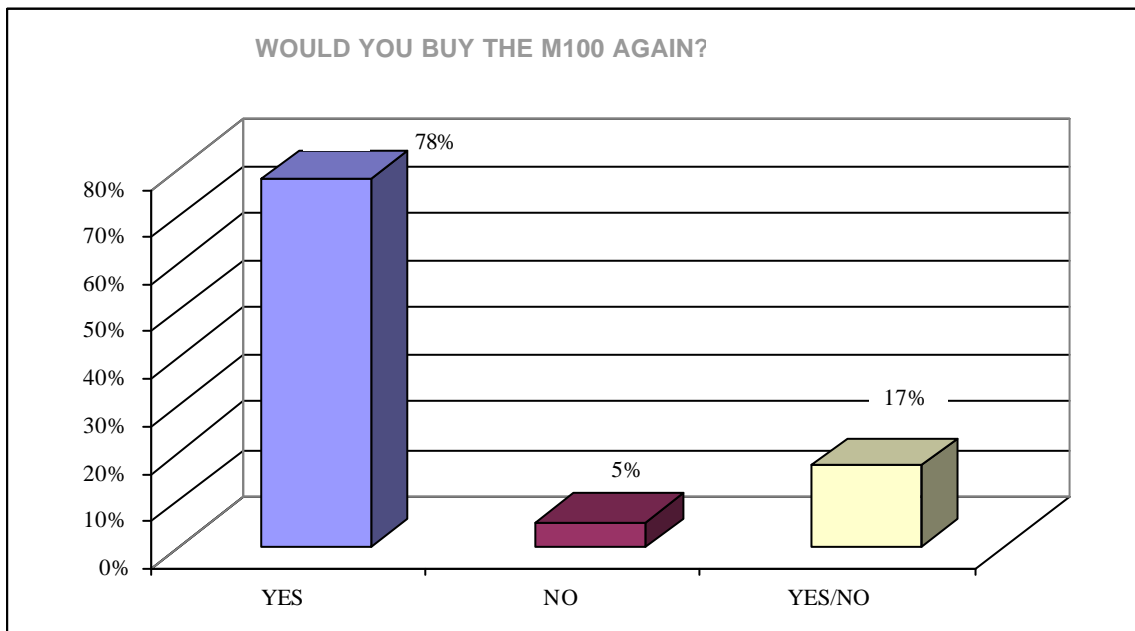
% are rounded values, this might cause small differences

Percentage of the satisfaction per score



% are rounded values, this might cause small differences

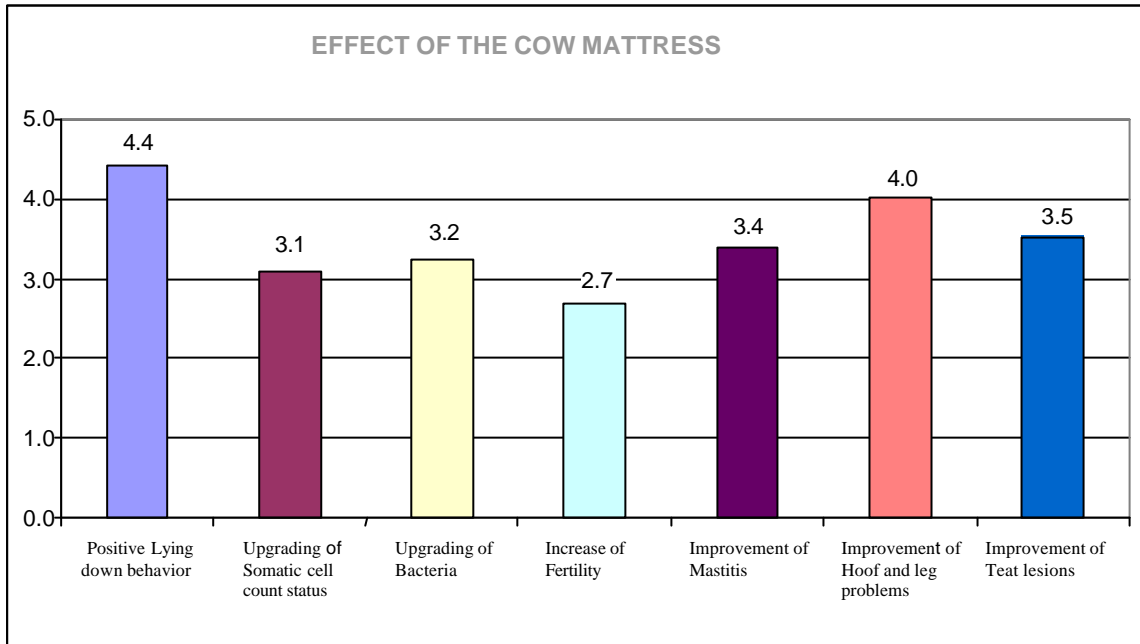
Would you buy M100 again?



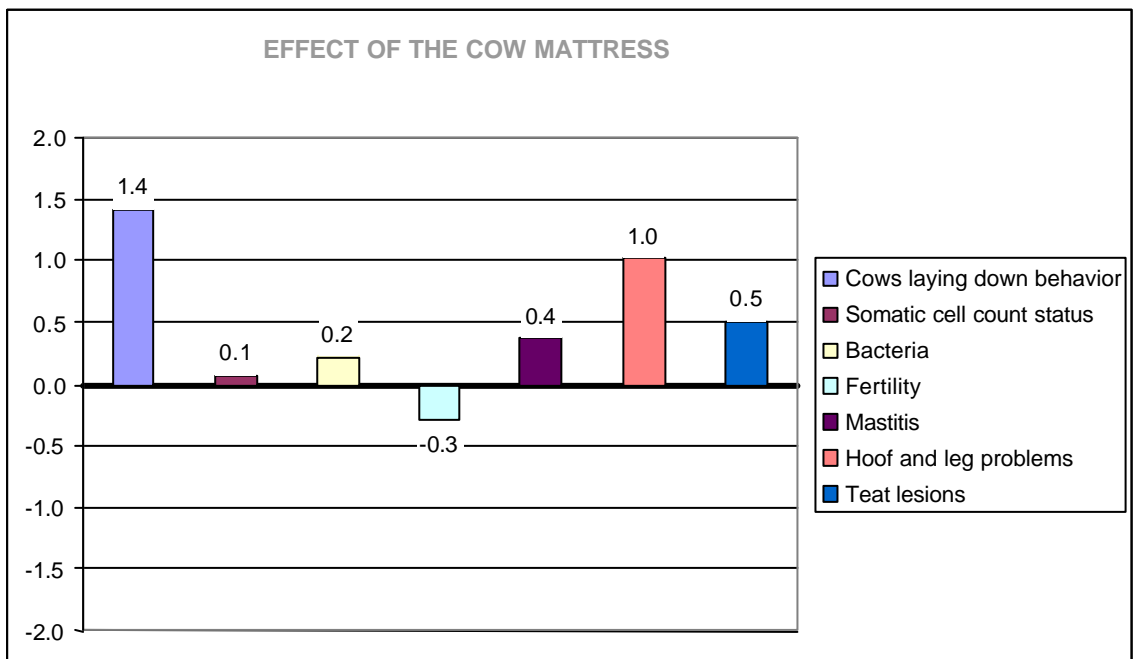
% are rounded values, this might cause small differences

8. Effect

- 1 means no effect
- 2 means small effect
- 3 means neutral
- 4 means high effect
- 5 means very high effect

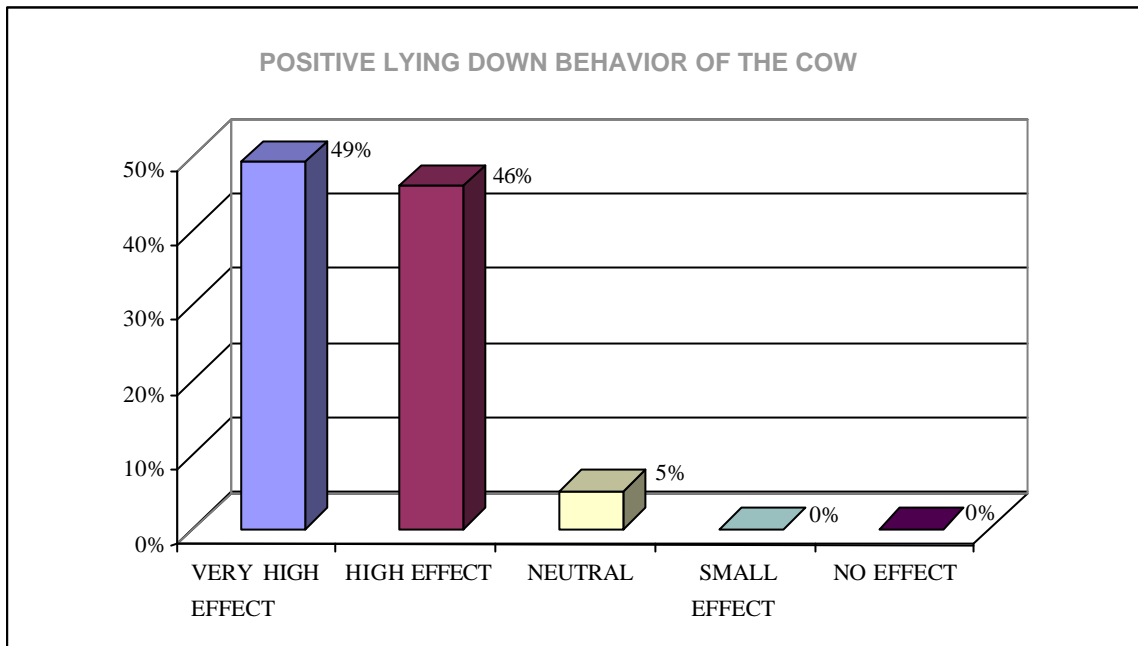


% are rounded values, this might cause small differences



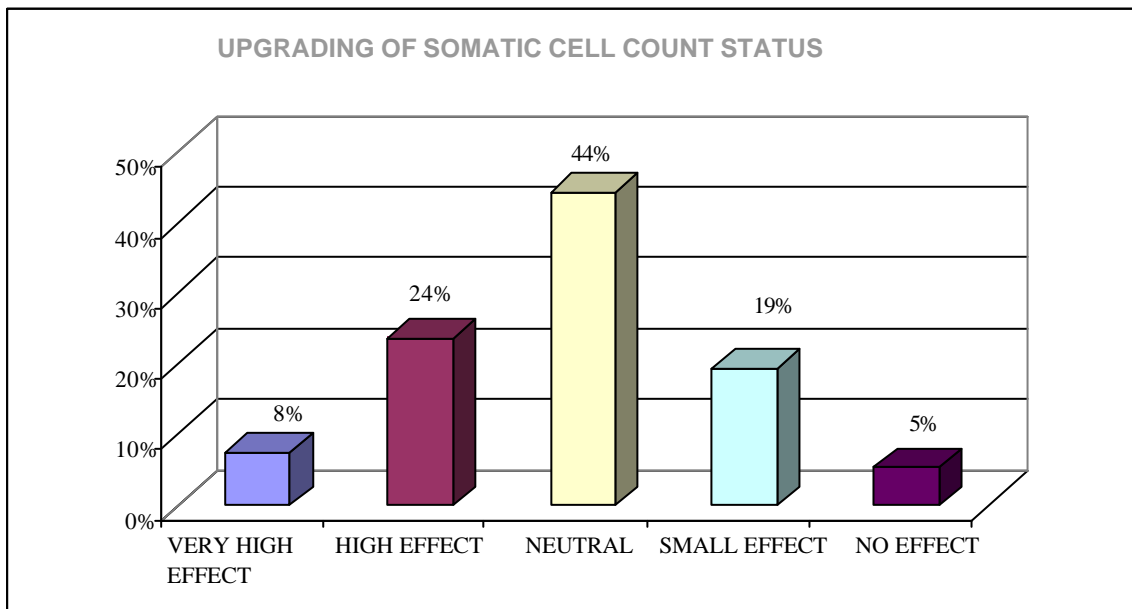
% are rounded values, this might cause small differences

Positive Cows laying down behaviour



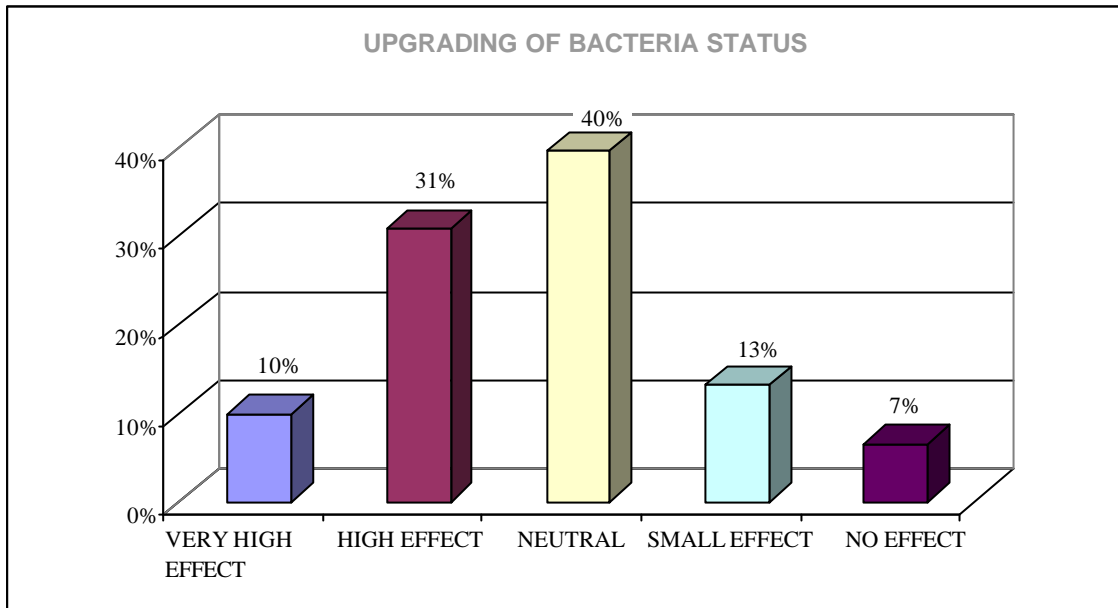
% are rounded values, this might cause small differences

Upgrading of Somatic cell count status



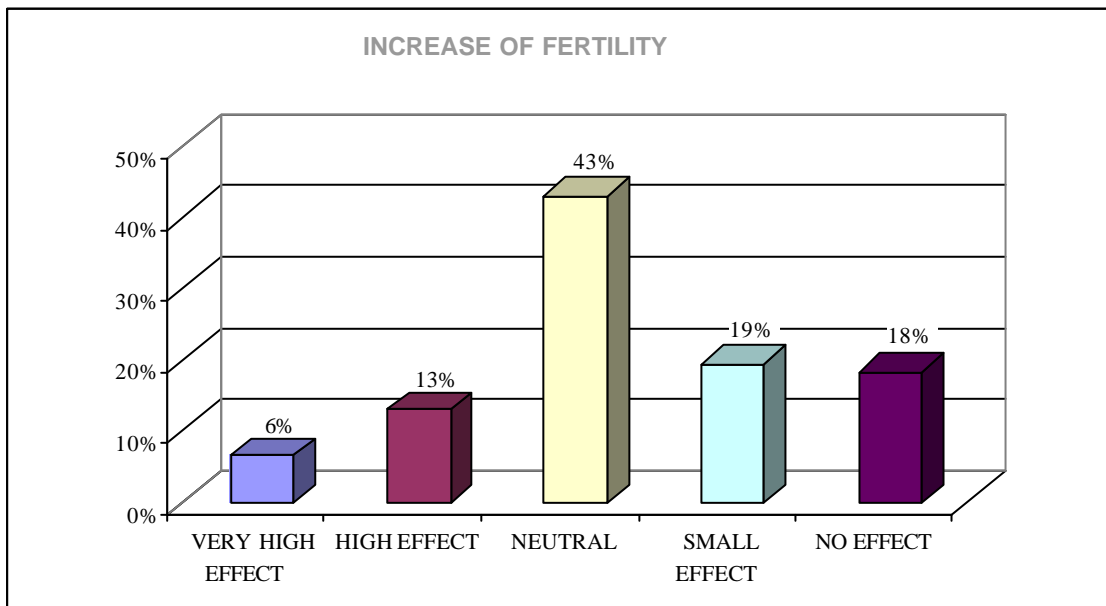
% are rounded values, this might cause small differences

Upgrading of Bacteria status



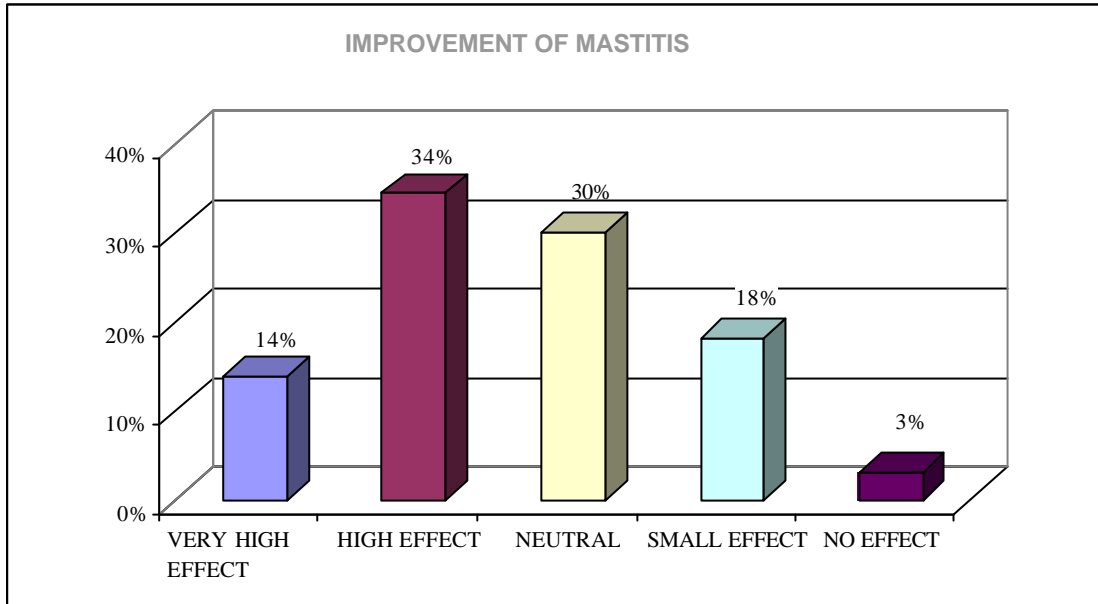
% are rounded values, this might cause small differences

Increase of fertility



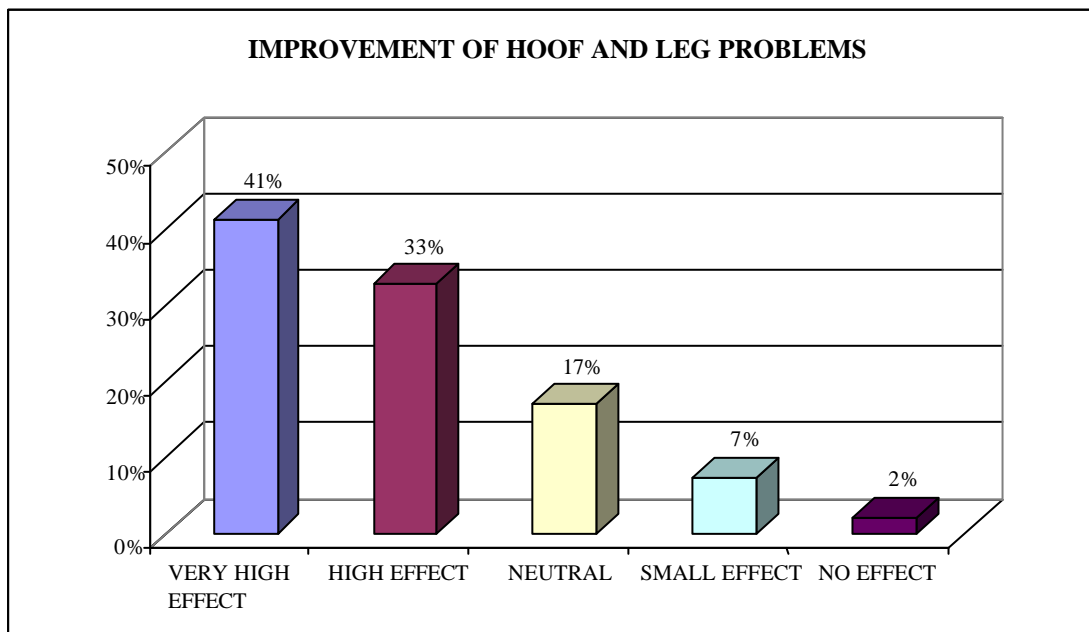
% are rounded values, this might cause small differences

Improvement of mastitis



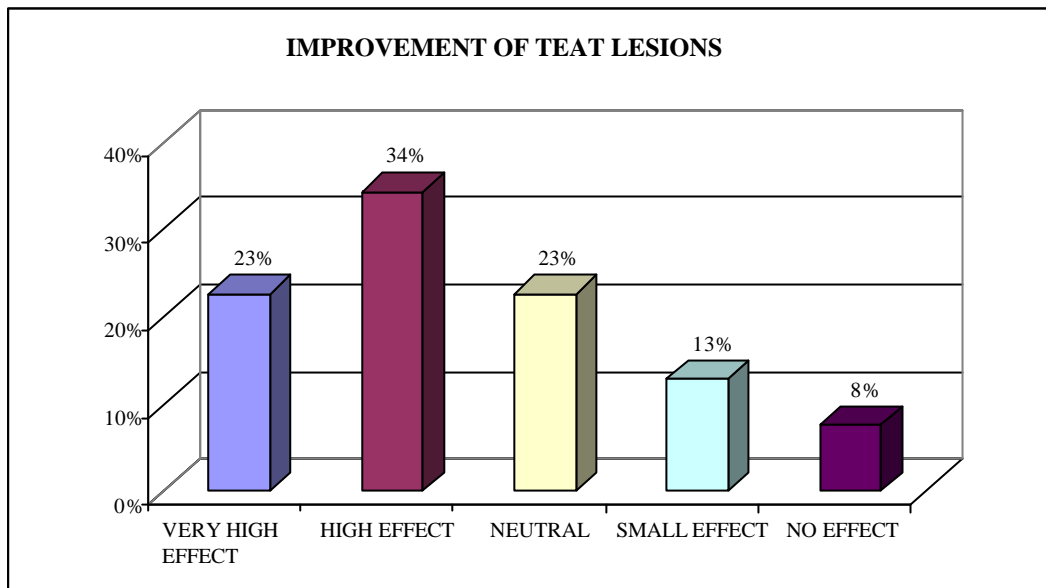
% are rounded values, this might cause small differences

Improvement of Hoof and leg problems



% are rounded values, this might cause small differences

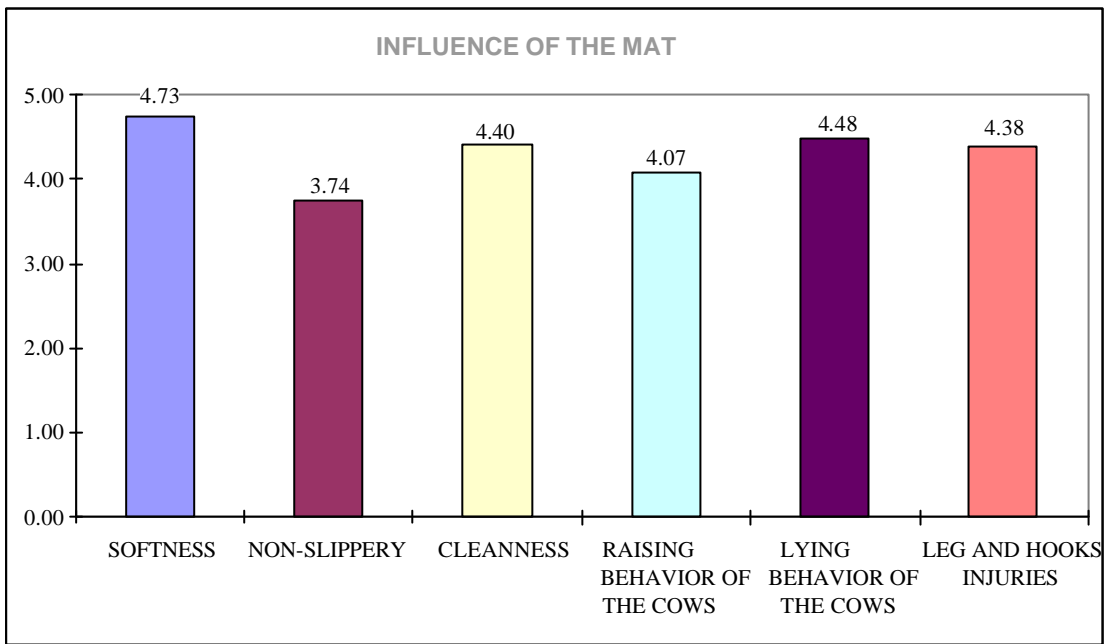
Improvement of teat lesions



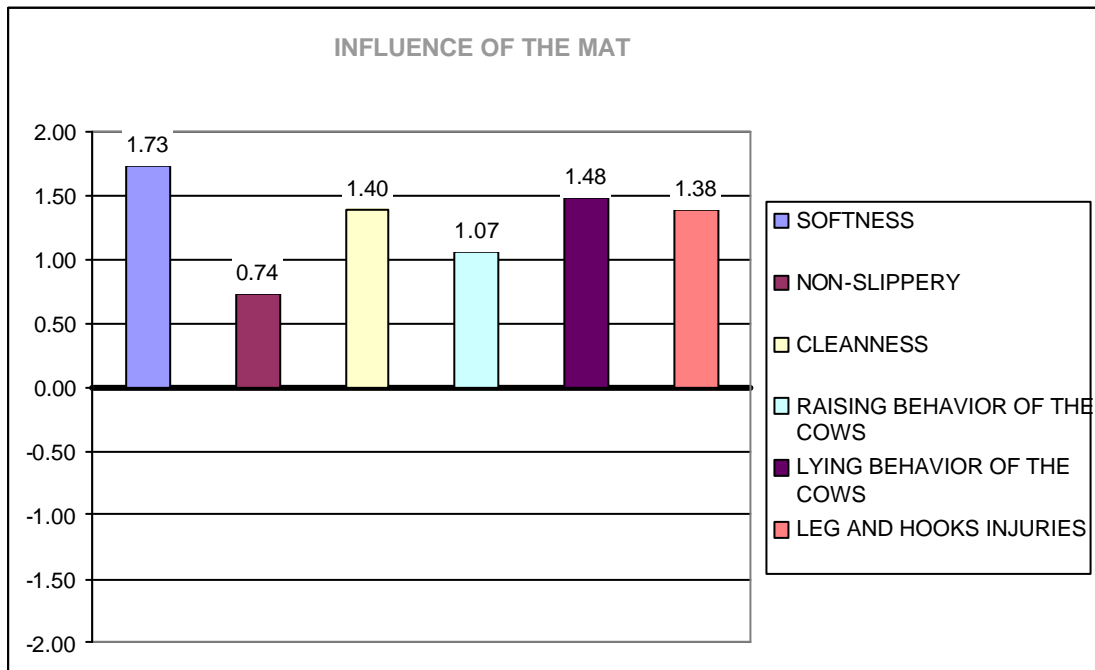
% are rounded values, this might cause small differences

9. Influence

- 1 means very bad
- 2 means bad
- 3 means neutral
- 4 means good
- 5 means very good

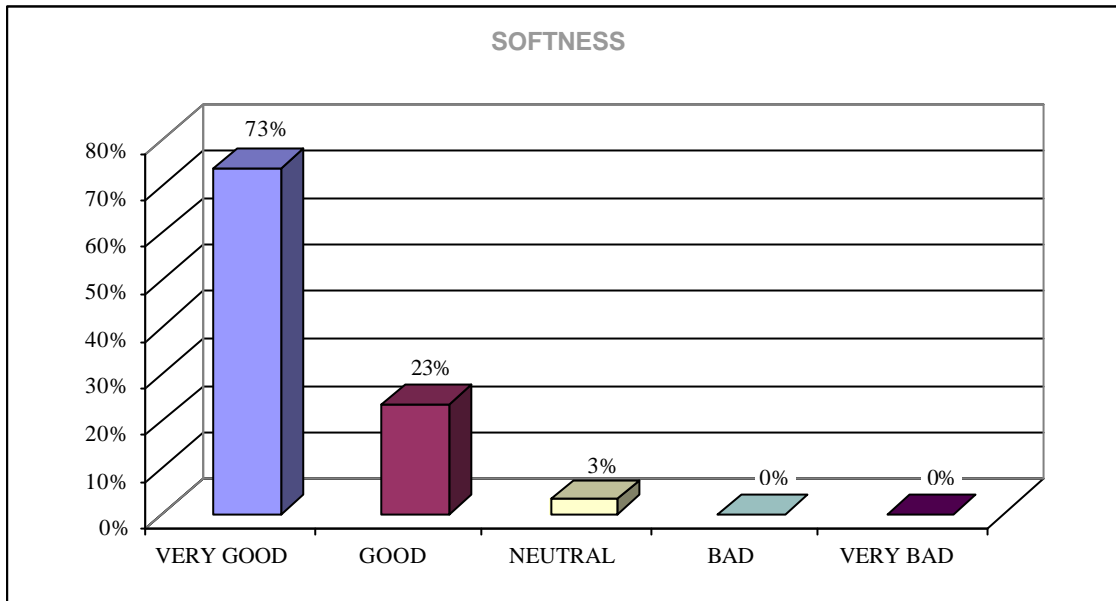


% are rounded values, this might cause small differences



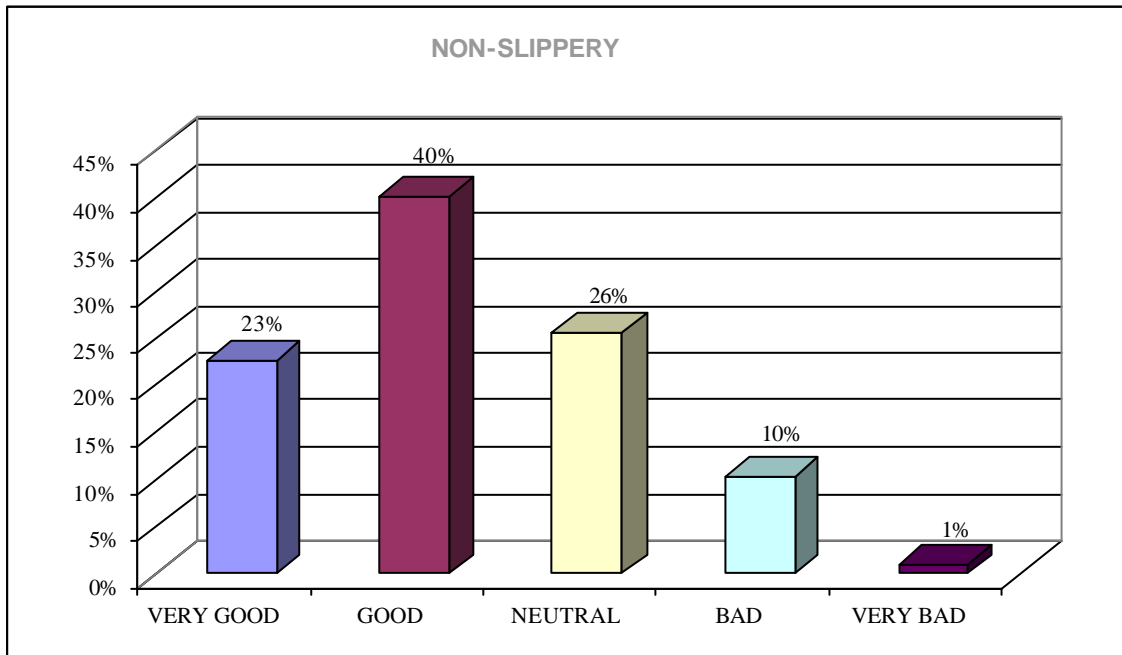
% are rounded values, this might cause small differences

Softness



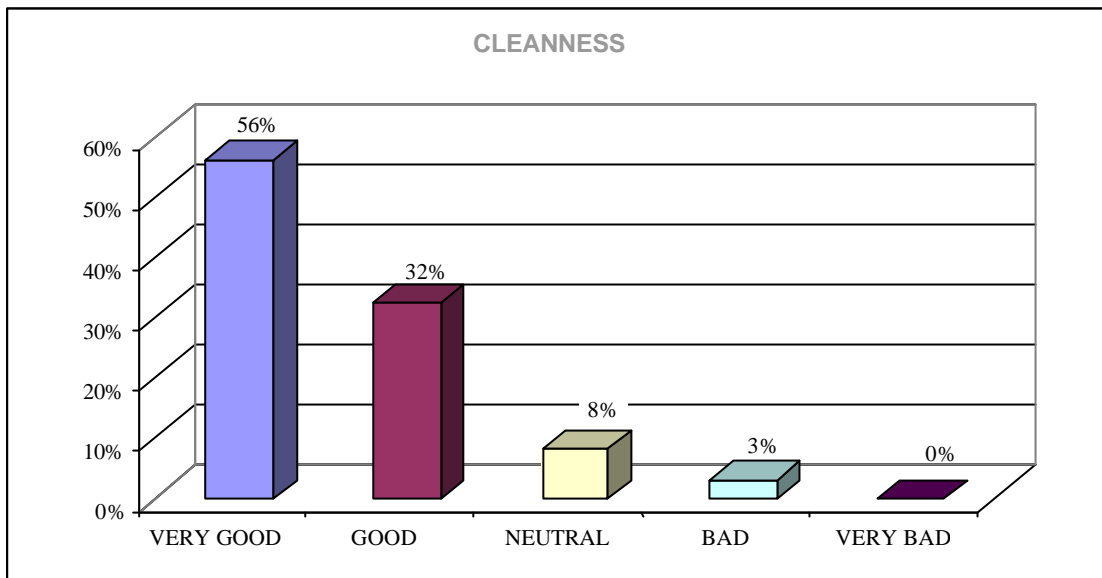
% are rounded values, this might cause small differences

Non-slippery



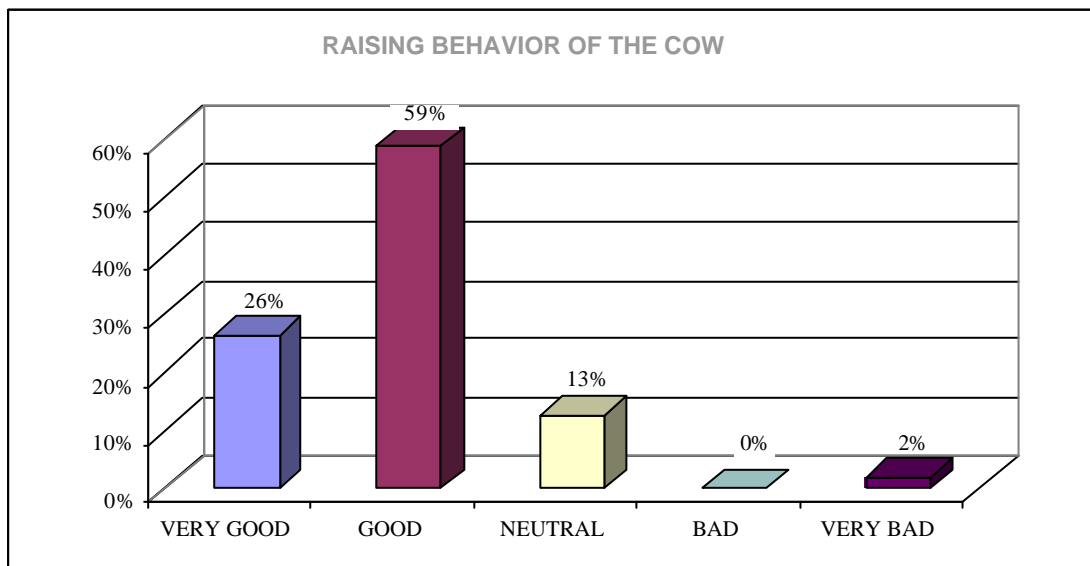
% are rounded values, this might cause small differences

Cleanness



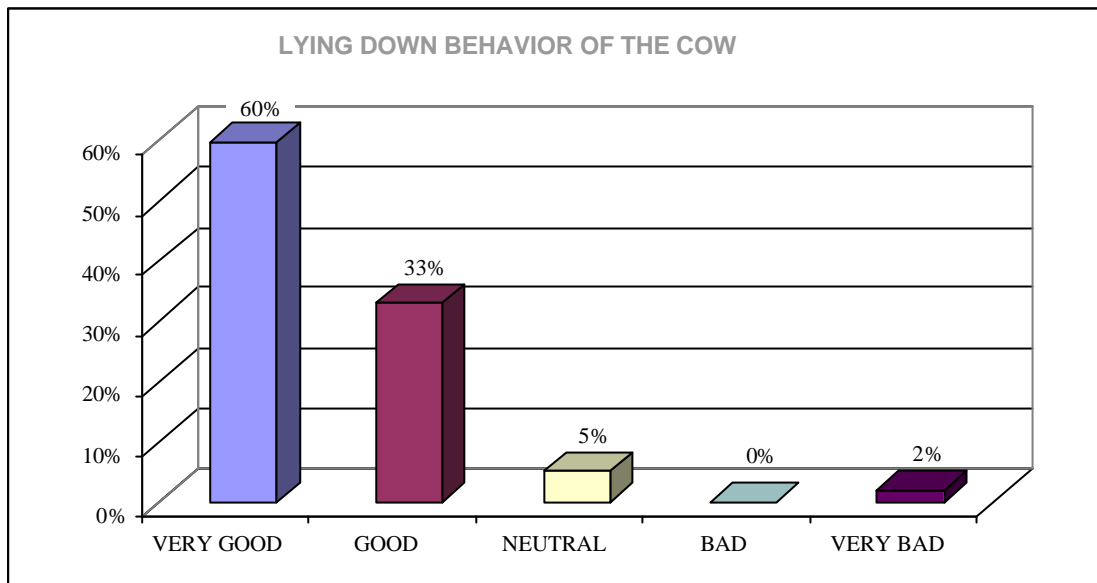
% are rounded values, this might cause small differences

Raising behaviour of the cows:



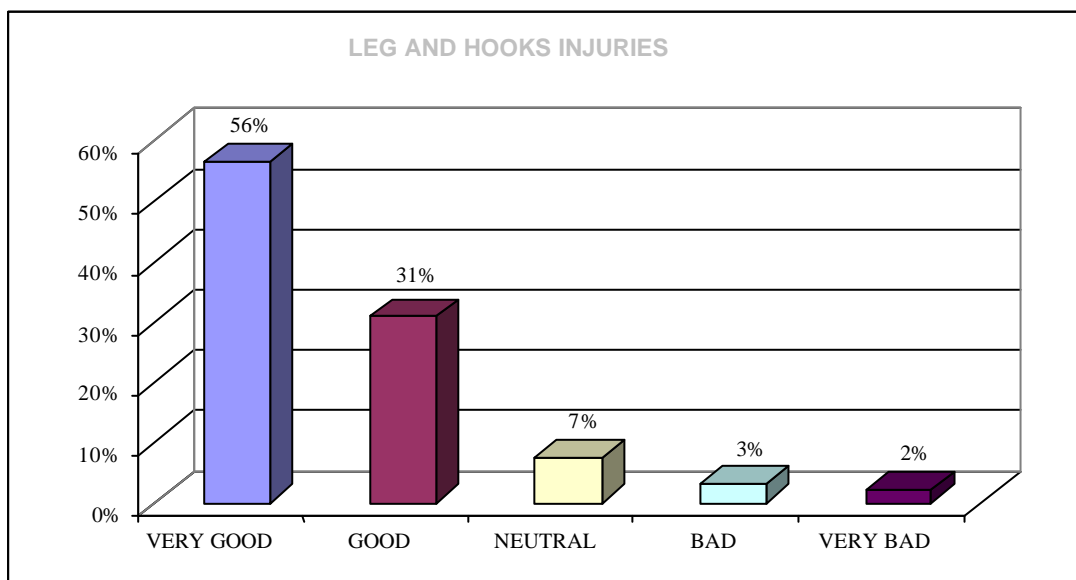
% are rounded values, this might cause small differences

Lying behaviour of the cows



% are rounded values, this might cause small differences

Leg and hooks injuries



% are rounded values, this might cause small differences

10. Additional named main positive aspects

